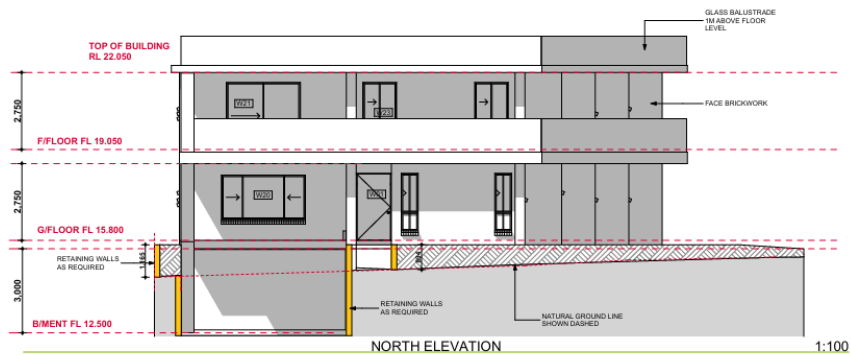




Leaf Nest

LeafNest is a multidisciplinary consultancy firm offering civil and architectural solutions to developers, contractors, and fellow engineering professionals. We specialize in modern residential, commercial, and hospitality design with a strong focus on functional aesthetics and cost-efficiency.

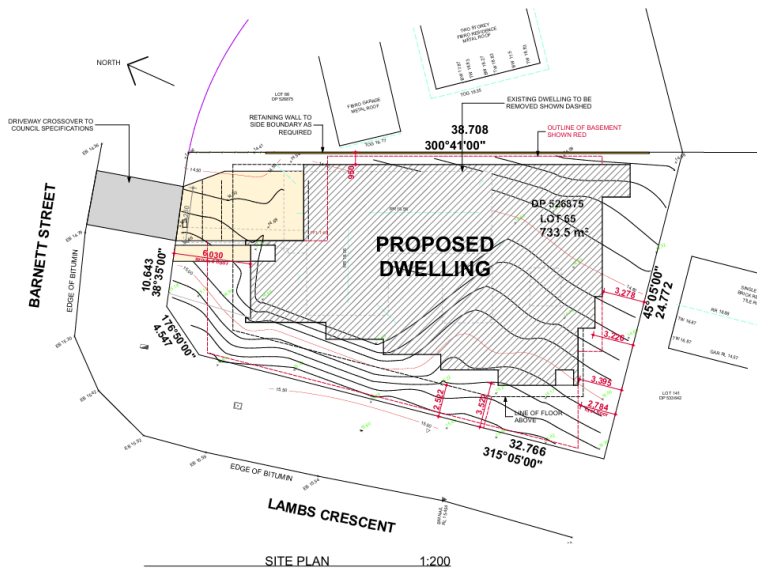
Some of Our Completed projects



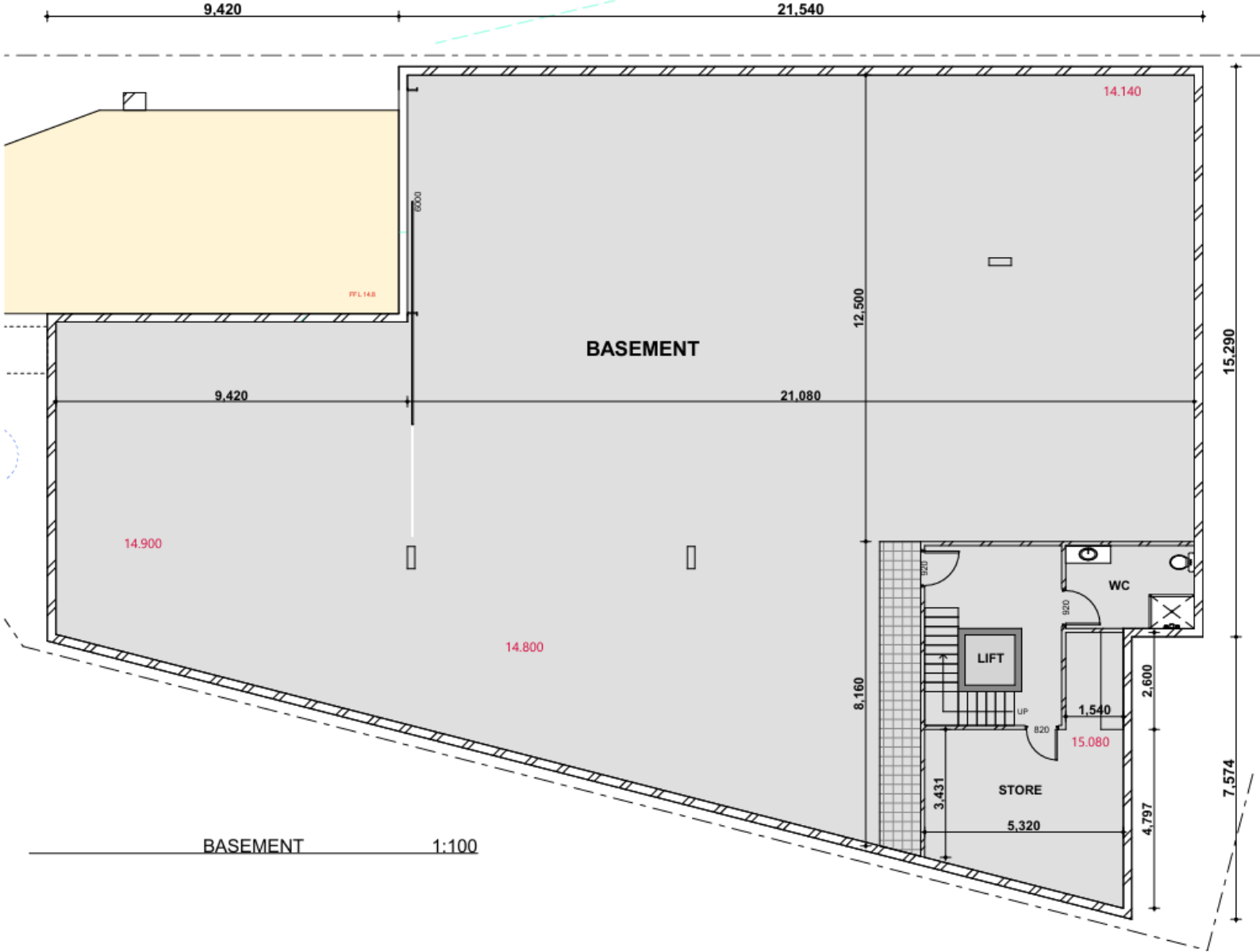
Project Type: Residential – **Double Storey Dwelling**

Scope: **Full architectural planning, space optimization, and exterior elevation design**

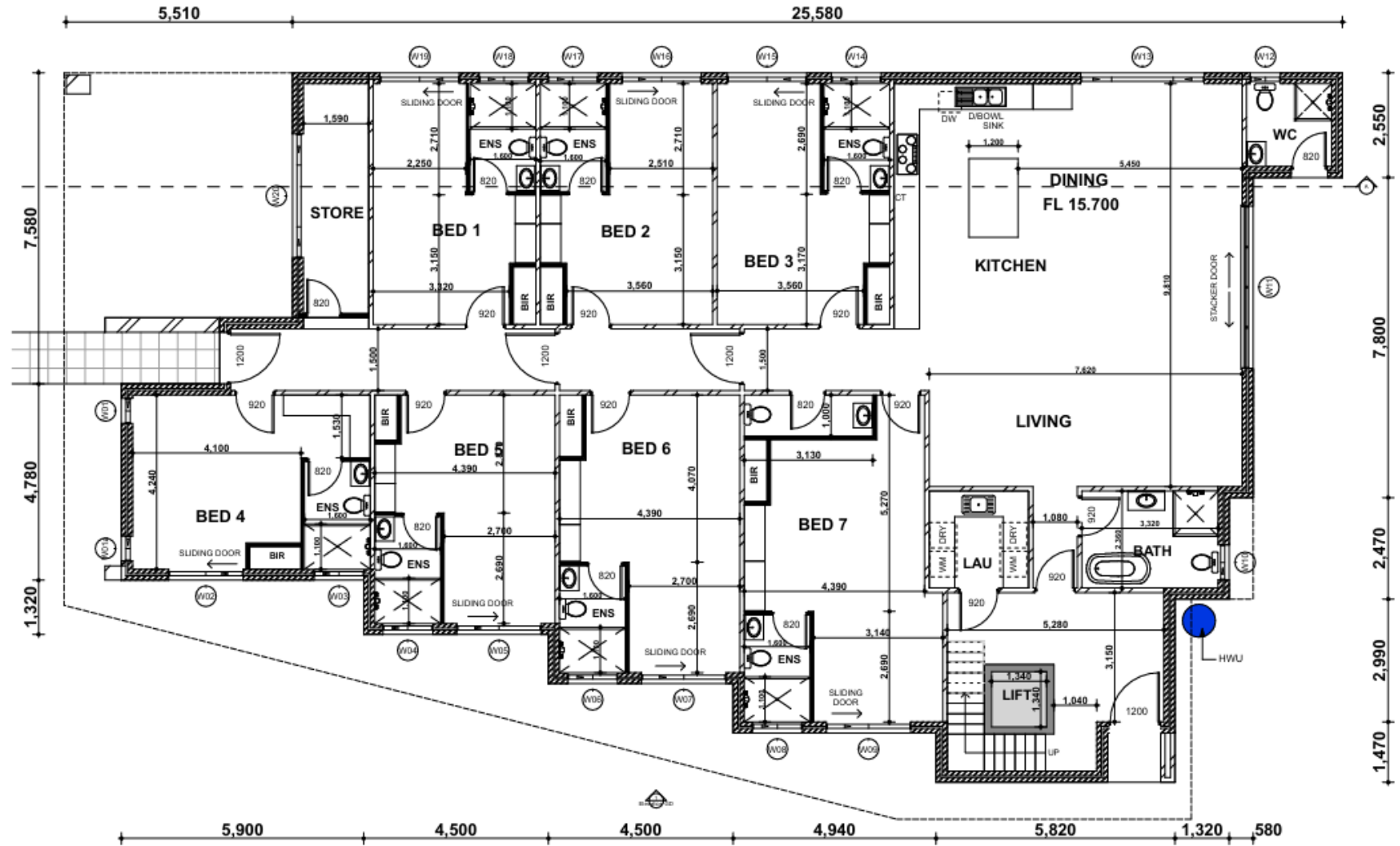
Software Used: AutoCAD, SketchUp, Lumion



BASEMENT PLAN



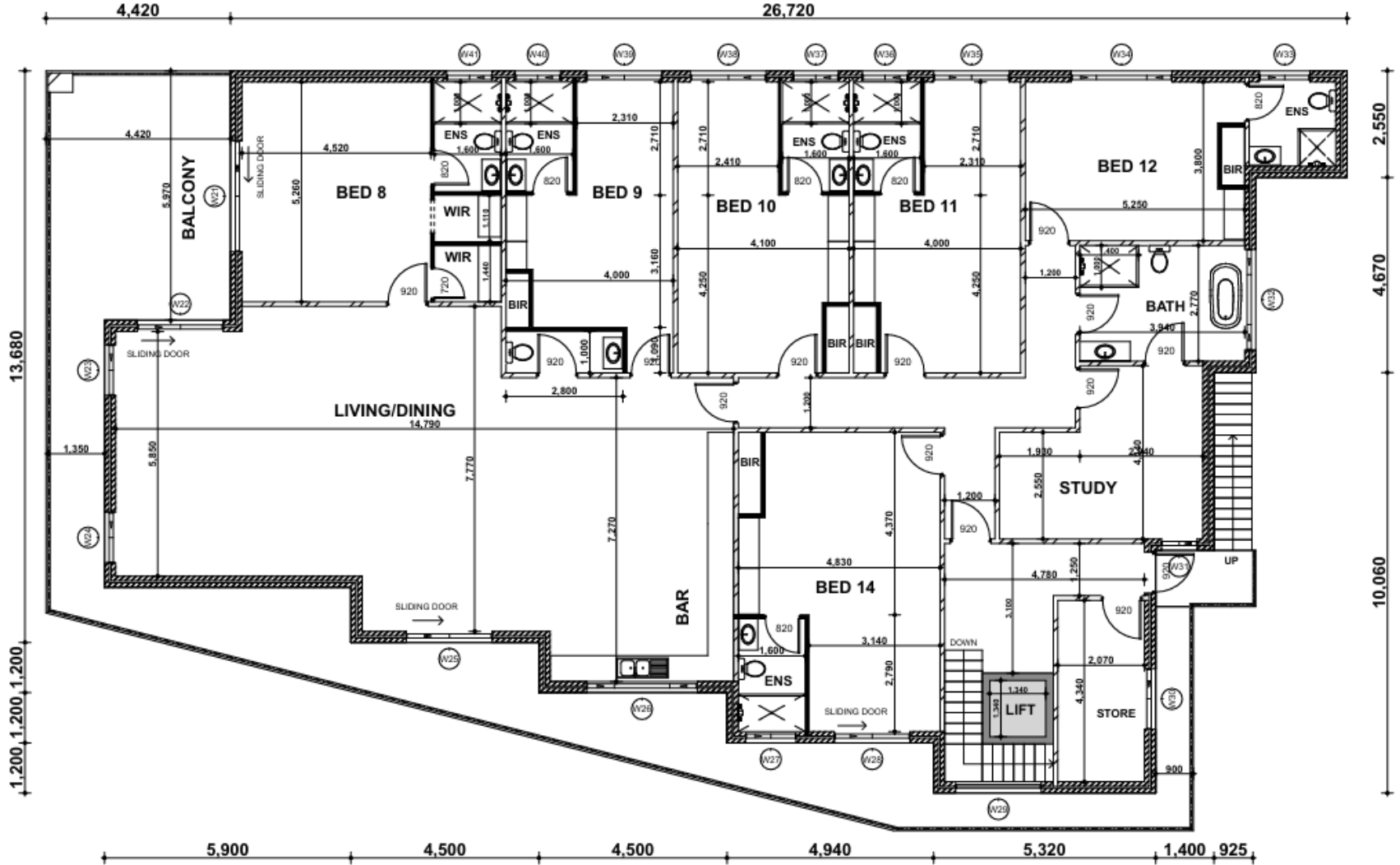
GROUND FLOOR PLAN



GROUND FLOOR 1:100

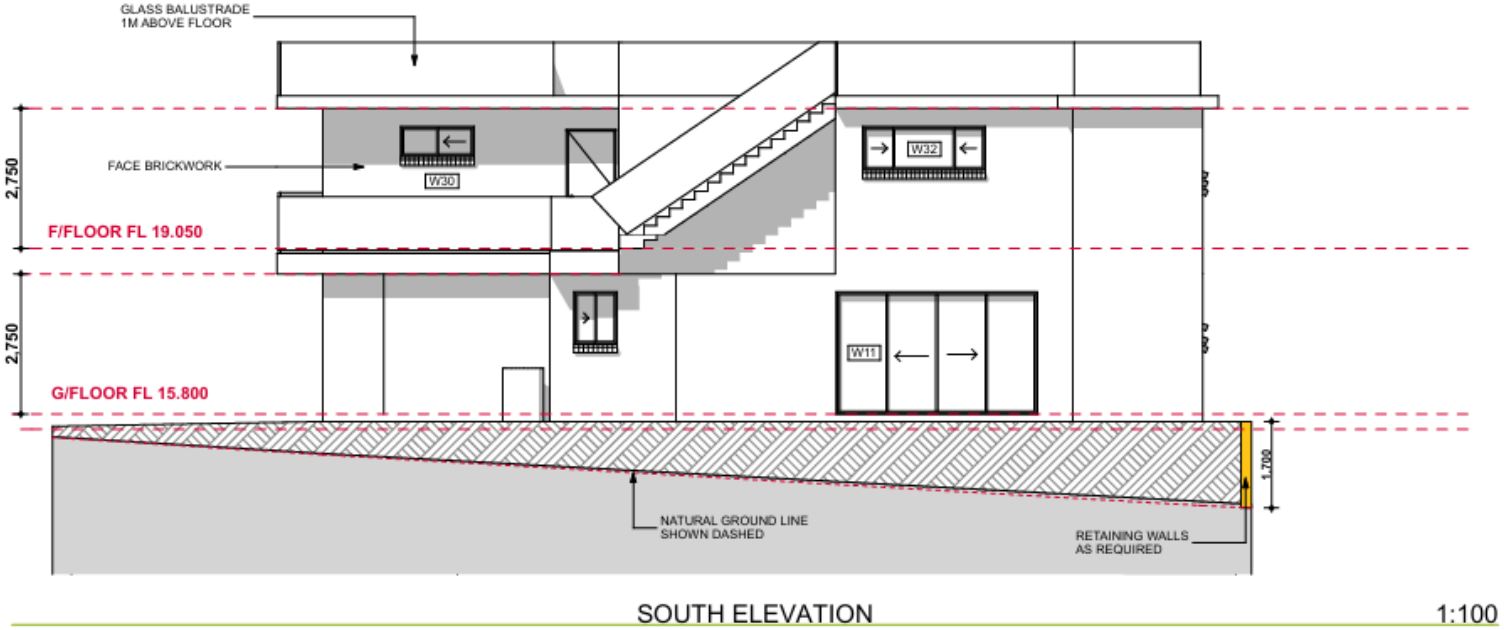
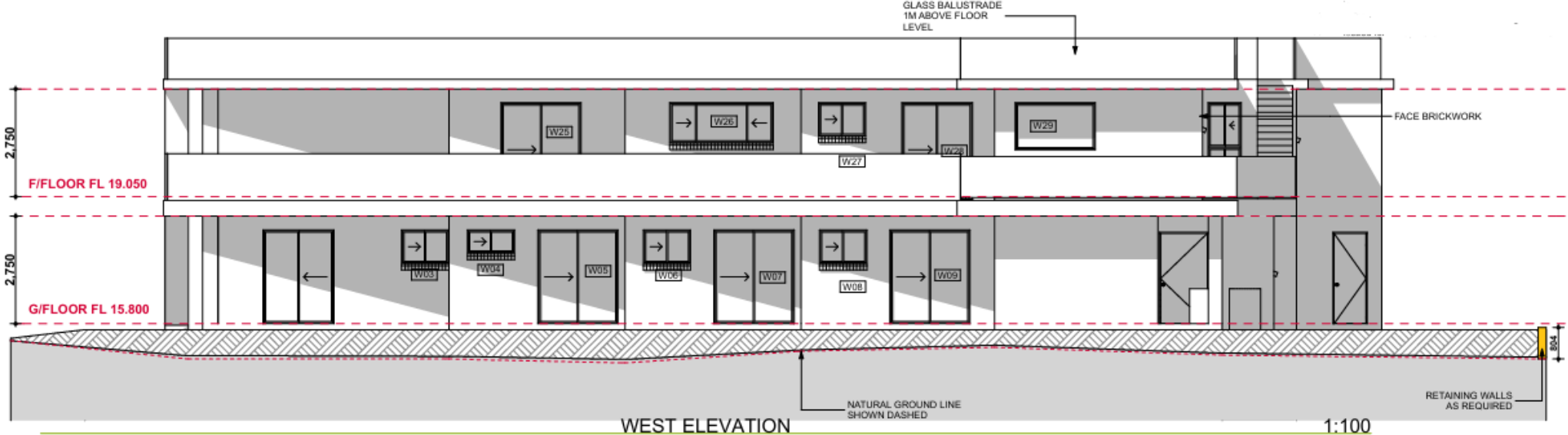


FIRST FLOOR PLAN

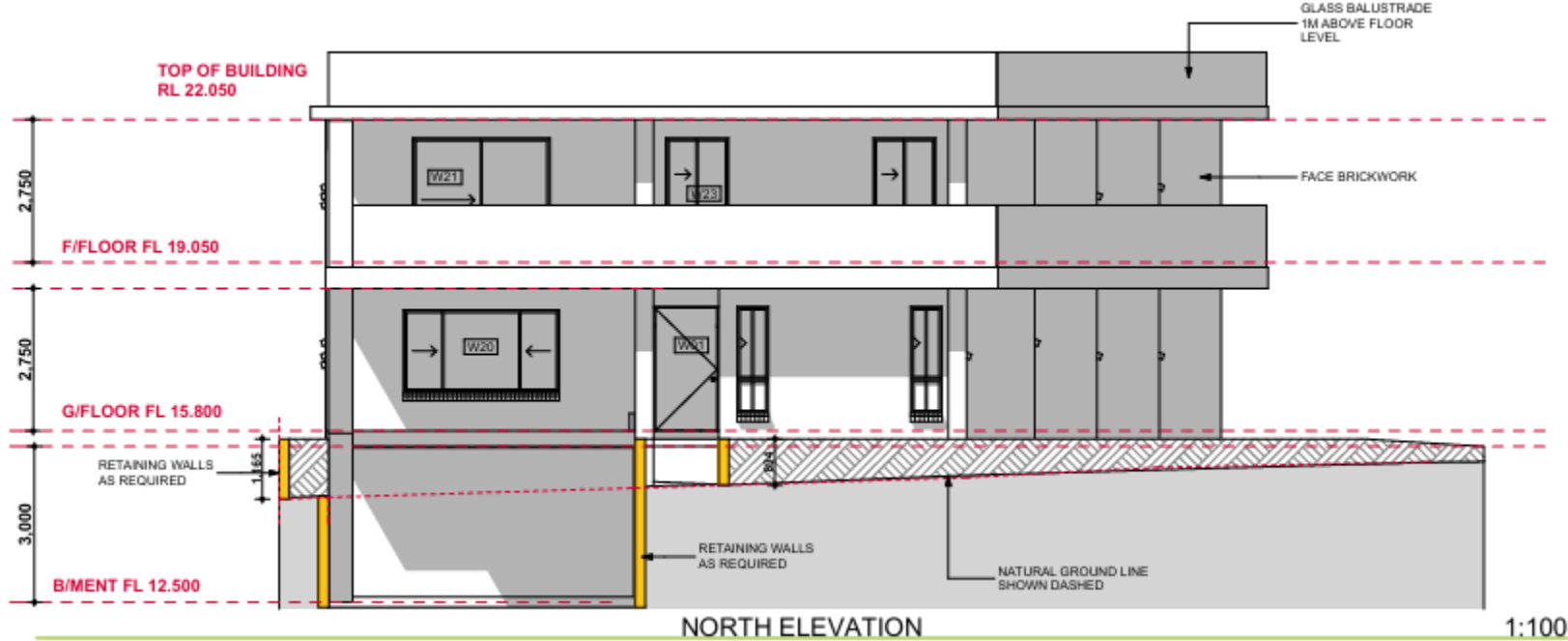


FIRST FLOOR 1:100

ELEVATIONS



ELEVATIONS



SECTIONS



Section A.A (1) 1:100



WINDOW SCHEDULE & BASIX COMMITMENTS

Window Schedule					
ID	Height	Width	Frame Type	Glazing	Opening Dir - Type
W01	2,060	610	aluminium	clear	sliding
W01a	2,060	610	aluminium	clear	sliding
W02	2,400	1,810	aluminium	clear	sliding door
W03	860	1,210	aluminium	obscure	sliding
W04	600	1,210	aluminium	obscure	sliding
W05	2,400	2,050	aluminium	clear	sliding door
W06	860	1,210	aluminium	obscure	sliding
W07	2,400	2,050	aluminium	clear	sliding door
W08	860	1,210	aluminium	obscure	sliding
W09	2,400	2,050	aluminium	clear	sliding door
W10	1,030	850	aluminium	obscure	sliding
W11	2,400	3,950	aluminium	clear	double stacker door
W12	1,030	730	aluminium	obscure	sliding
W13	600	3,010	aluminium	clear	sliding
W14	860	1,210	aluminium	obscure	sliding
W15	2,400	1,930	aluminium	clear	sliding door
W16	2,400	1,930	aluminium	clear	sliding door
W17	860	1,210	aluminium	obscure	sliding
W18	860	1,210	aluminium	obscure	sliding
W19	2,400	1,930	aluminium	clear	sliding door
W20	1,600	3,010	aluminium	clear	sliding
W21	2,400	2,650	aluminium	clear	sliding door
W22	2,400	2,050	aluminium	clear	sliding door
W23	2,060	1,210	aluminium	clear	sliding
W24	2,060	1,210	aluminium	clear	sliding
W25	2,400	2,050	aluminium	clear	sliding door
W26	1,030	2,650	aluminium	clear	sliding
W27	860	1,210	aluminium	obscure	sliding
W28	2,400	1,810	aluminium	clear	sliding door
W29	1,200	2,050	aluminium	clear	fixed
W30	600	1,450	aluminium	clear	sliding
W31	1,800	850	aluminium	clear	sliding
W32	860	2,410	aluminium	obscure	sliding
W33	860	1,210	aluminium	obscure	sliding
W34	1,030	2,410	aluminium	clear	sliding
W35	1,200	1,810	aluminium	clear	sliding
W36	860	1,090	aluminium	obscure	sliding
W37	860	1,090	aluminium	obscure	sliding
W38	1,200	1,810	aluminium	clear	sliding
W39	1,200	1,810	aluminium	clear	sliding
W40	860	1,090	aluminium	obscure	sliding
W41	860	1,090	aluminium	obscure	sliding

Basix Commitments

Water

- Shower head: 3 Star
- Toilet: 4 Star
- Kitchen taps: 5 star
- Bathroom taps: 5 star
- Rainwater tank size: 2000L
- Rainwater tank connected to: landscaping, laundry

Energy

- Hot water system: Electric Heat Pump
- Cooling System: Ducted AC
- Heating System: Ducted AC
- Clothes Line: Outdoor
- Cooktop type: Induction
- Oven type: Electric
- PV System Size: 2.5kW

Insulation and glazing

- Concrete slab on ground:
 - Under slab: Nil
 - Slab edge: Nil
- Suspended floor: R2.5
- External walls (except basement): R1.5
- Internal walls adjacent wet areas: R2.5
- Ceiling: R4.0
- Roof: Nil
- Glazing: Aluminium DG, clear or Single glazed, Low E required



SITE MANAGEMENT PLAN

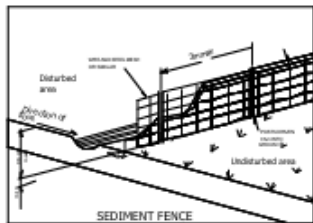
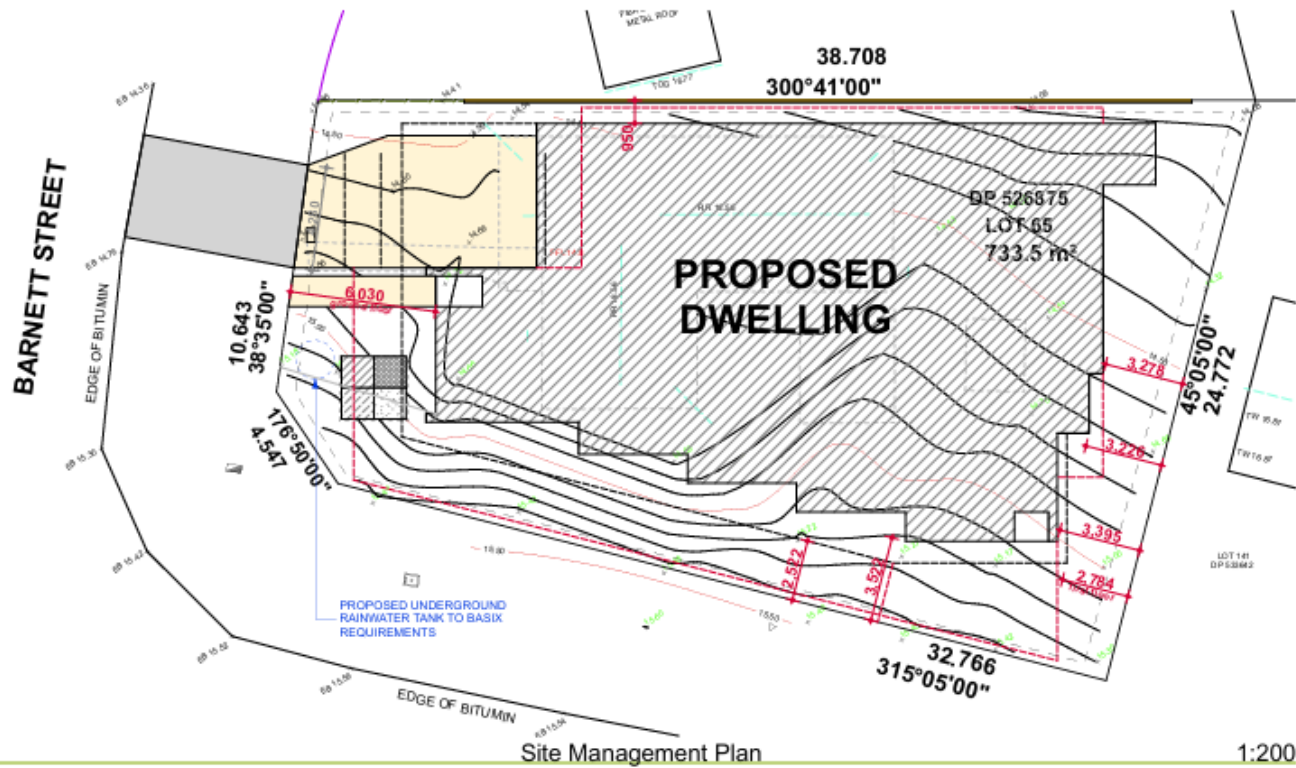


FIG 1

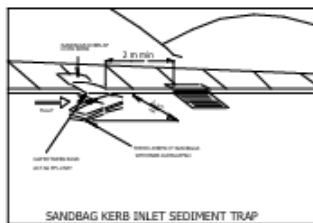


FIG 2

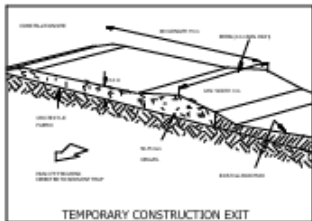
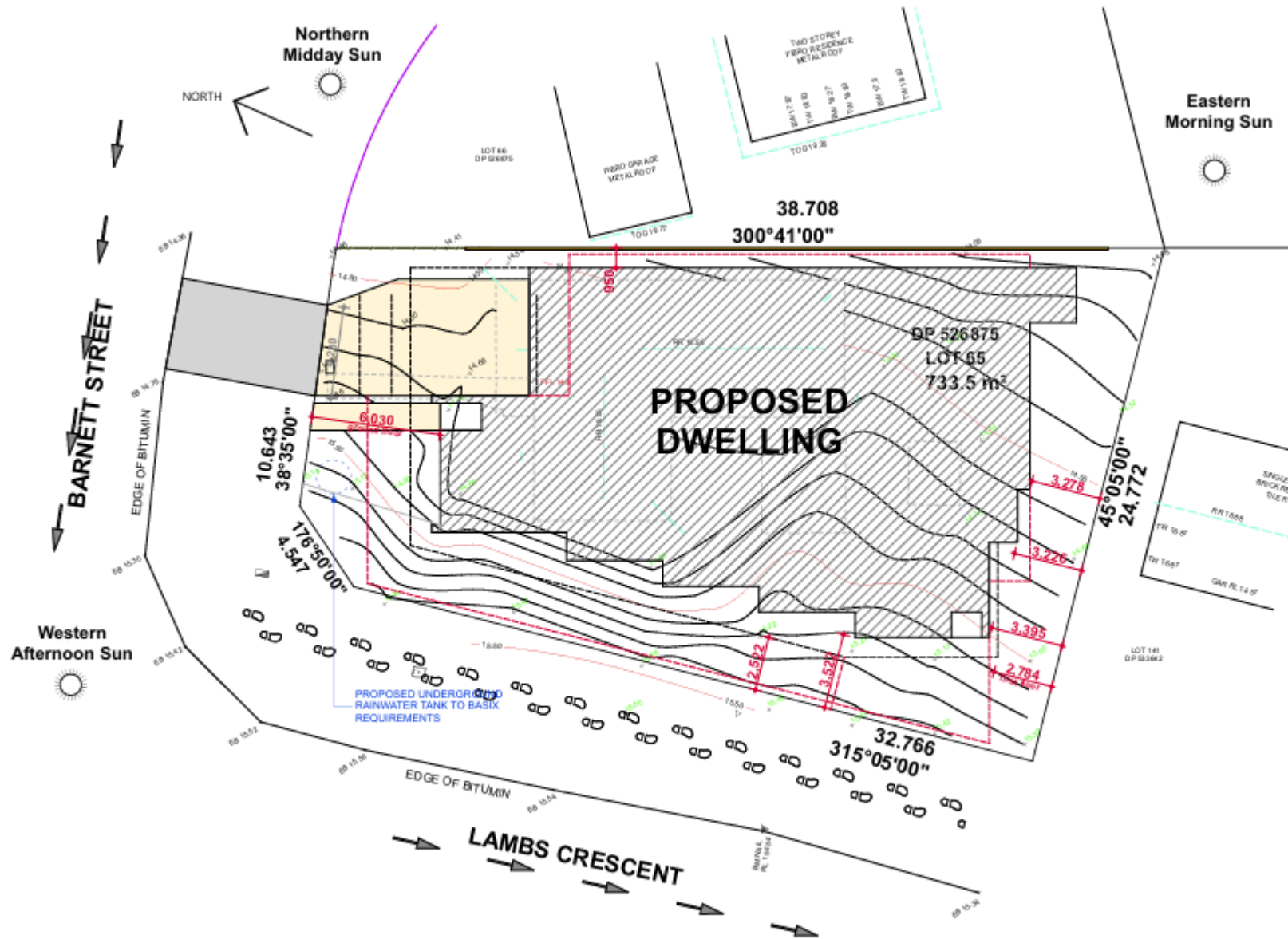


FIG 3

SITE ANALYSIS PLAN



KEY	
	Proposed tree (Refer to landscape architects plan for layout)
	Existing Tree (removed)
	Existing Tree (remain)
	Demolished building
	Proposed building
	Hard landscaping
	Soft landscaping
	Privacy issue
	Views
	Pedestrian movement
	Vehicle movement
	Building Levels
	Water course
	Prevailing winds
	Sun Direction

Project Type: Commercial – **Multi-Tower Layout**

Scope: **Site planning, tower positioning strategy, and structural grid development for optimal space utilization and access.**

Software Used: AutoCAD, Revit



DRAWING INDEX AND DOCUMENT CONTROL

DRAWING DESCRIPTION	DRAWING NUMBER	SHEET NO.	ISSUE NO.	ISSUE DATE	DRAWING STATUS				
					CANCELED	PRELIMINARY	FOR CONSTRUCTION	AS BUILT	REFERENCE ONLY
SITE SPECIFIC NOTES	QLD005626	S0	1	14/05/25			✓		
SITE ACCESS AND LOCALITY PLAN	QLD005626	S1	1	14/05/25			✓		
SITE LAYOUT	QLD005626	S1-1	1	14/05/25			✓		
ANTENNA LAYOUT	QLD005626	S1-2	1	14/05/25			✓		
NORTH ELEVATION	QLD005626	S3	1	14/05/25			✓		
AERIAL PHOTO LOCALITY PLAN	QLD005626	S7	1	14/05/25			✓		
SITE EARTHING PLAN	QLD005626	G4	1	14/05/25			✓		
SITE EARTHING NOTES	QLD005626	G4-1	1	14/05/25			✓		
PARABOLIC DISH MOUNTING DETAILS	QLD005626	T3	1	14/05/25			✓		
TP006F01 STRUCTURAL DESIGN CERTIFICATION PROJECT NO. US-42210	QLD005626	Z1	2	14/05/25			✓		
GEO TECHNICAL REPORT PROJECT No. 1241918-1	QLD005626	Z1-1	1	20/12/24			✓		
REFERENCE DRAWINGS:									
STANDARD CONSTRUCTION NOTES	TP018ST04	1	1	06/11/23			✓		
CONCRETE POLE EARTH BAR MOUNTING	TP018ST201-6	1	1	29/04/22			✓		
FITOUT AT COPPER THEFT SITES	TP018ST201-9	1	1	17/05/22			✓		
EARTHING STANDARDS - EARTH STRAP INSTALLATION METHOD	TP018ST201-10	1	2	15/07/24			✓		
EARTH STRAP TAIL TERMINATION METHOD	TP018ST201-11	1	1	29/04/22			✓		
CONCRETE POLE EARTHING DETAILS -1	TP018ST202-1	1	1	23/02/22			✓		
ACCESS SEEKER EARTHING	TP018ST203-1	1	1	19/04/22			✓		
CONCRETE POLE EARTHING DETAILS -1	TP018ST204-1	1	2	15/07/24			✓		
CONCRETE POLE EARTHING DETAILS -2	TP018ST204-2	1	2	15/07/24			✓		



SITE SPECIFIC NOTES

SITE SPECIFIC NOTES

STRUCTURE

TYPE: PROPOSED AMPLITEL 12.5m OVERALL LENGTH 12KN TIMBER POLE
POLE REFERENCE: POLE SPECIFICATION AS MENTIONED BY THE CLIENT IN EMAIL DATED ON JAN 8, 2025

ANTENNA ACCESS

TELSTRA: BY CLIMBING PEGS

DISH MOUNTS

TYPE: PROPOSED TELSTRA STEEL PIPES
COLOUR: GALVANISED FINISH
REFERENCE DRAWING: SHEET T3

EARTHING DETAIL

REFER TO SHEETS G4 & G4-1 FOR DETAILS.
REFER TO SHEET TP018ST201-6 FOR CONCRETE POLE EARTH BAR MOUNTING DETAILS. REFER TO SHEET TP018ST204-1 AND TP018ST204-2 FOR CONCRETE POLE EARTHING DETAIL. REFER TO TP018ST202-1 FOR FOR INFRACO SITE AND POLE EARTHING STANDARDS. REFER TP018G03 CIVIL DESIGN EARTHING MANUAL.
REFER TO TP018ST203-1 FOR ACCESS SEEKER EARTHING.

ENVIRONMENTAL ISSUES

REFER TO ENVIRONMENTAL RISK ASSESSMENT PROCEDURE DOCUMENT NUMBER: 018502

EXISTING PROPERTY SIGNAGE

AMPLITEL BRANDED SIGN SHALL BE INSTALLED IN ACCORDANCE WITH TP018G02. REFER TO TP013ST03 FOR METHOD OF ATTACHMENT. JABAC NO. TEMC2005-M SHALL BE FIXED TO COMPOUND GATE

STRUCTURE SIGNAGE

SIGNAGE ON THE STRUCTURE SHALL BE INSTALLED IN ACCORDANCE WITH TP013ST03.
MERCs-1 SIGN
JABAC NO. TERH4311-M OR TERH4312-M (SELECT AS APPLICABLE)
DO NOT CLIMB SIGN
JABAC NO. TERH270-M

SITE ACCESS

VIA 7 ELLIOTT ST, MOUNT PERRY, QLD 4671.
REFER TO SHEET S1 FOR DETAILS

GENERAL NOTES

1. ALL DIMENSIONS ARE IN MILLIMETRES UNLESS SPECIFIED OTHERWISE.
2. CABLES AND ALL ACCESS POINTS ON THE STRUCTURE MUST BE BIRD PROOFED IN ACCORDANCE WITH THE METHODS SPECIFIED IN DOCUMENT NO. 003615 EXTERNAL PLANT STANDARDS FOR MOBILE BASE STATIONS, SECTION 6.3.3. FOR QUEENSLAND, ALL FEEDERS ARE TO BE BIRD PROOFED WHEN INSTALLED.
3. SERVICES, WHERE SHOWN ARE INDICATIVE ONLY. LOCATION OF ALL RELEVANT EXISTING SERVICES SHALL BE IDENTIFIED AND CONFIRMED PRIOR TO COMMENCING WORK. THE CONTRACTOR TO LIAISE WITH RELEVANT AUTHORITIES FOR DIRECTIONS AND PERMITS REQUIRED.
DIAL BEFORE YOU DIG 1100 AND LOCATE ALL UNDERGROUND SERVICES PRIOR TO ANY EXCAVATION WORK.
4. FEEDER CONNECTION DETAILS, ELECTRICAL AND MECHANICAL TILTS ARE TO BE OBTAINED FROM CANRAD REPORTS.
5. CONSTRUCTORS ARE TO BE AWARE OF TELSTRA DOCUMENT 007338-C8-11 AND IN PARTICULAR CLAUSE 7.3 & 10.3 WHICH DESCRIBES REQUIREMENTS PERSONNEL MUST UNDERTAKE IN RESPECT TO ASBESTOS MANAGEMENT AT TELSTRA FACILITIES.
6. THE LOCATION AND DEPTH OF ANY EXISTING UNDERGROUND SERVICES SHALL BE PHYSICALLY VERIFIED ON SITE PRIOR TO COMMENCING EXCAVATION (e.g. BY POTHOLING)

SPECIFIC NOTE:

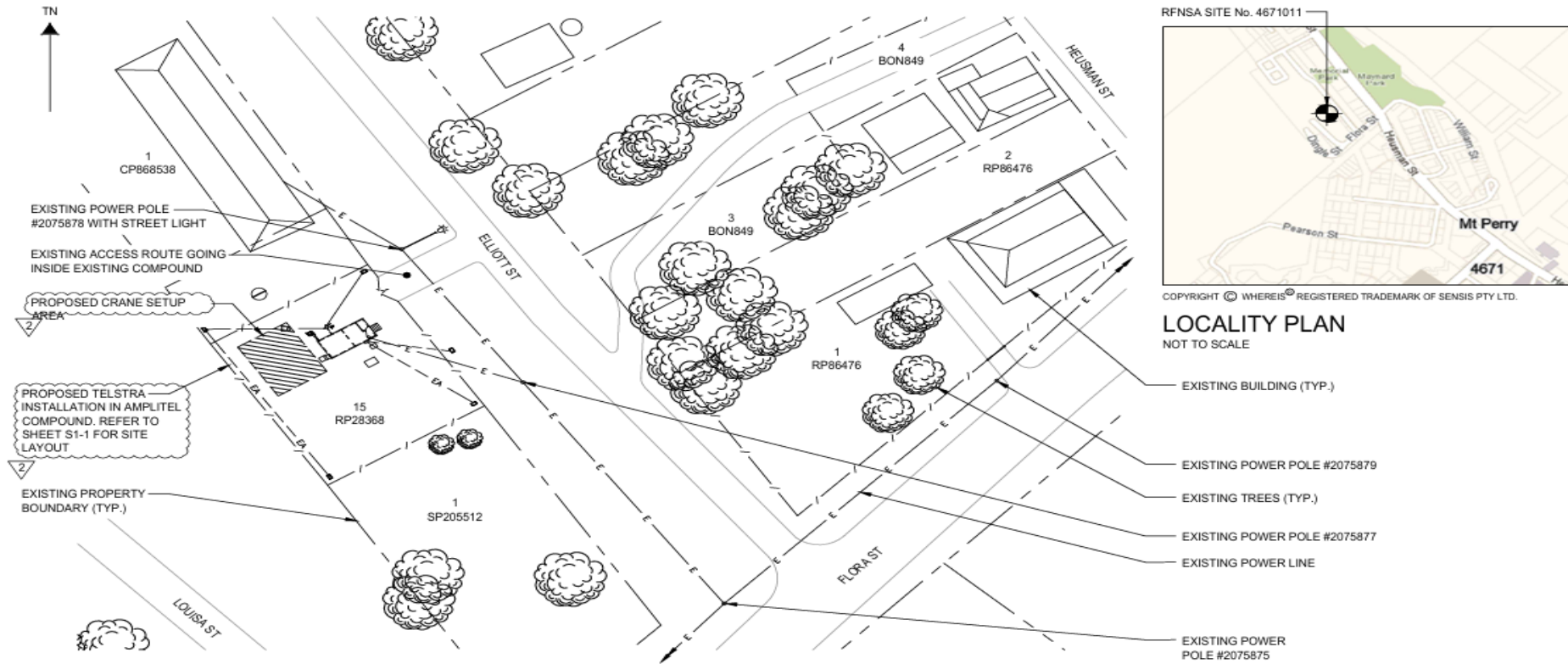
1. U/G SERVICE SEARCH COMPLETED WITH ELECTROMAGNETIC TOOLS AND SHOWN ON THE DRAWINGS.

SERVICES LEGEND

-T———T———T———T———	OPTICAL FIBRE ABOVE GROUND
——T-----T-----T-----	OPTICAL FIBRE BELOW GROUND
——— E ——— E ———	ABOVE GROUND ELECTRICAL SUPPLY
—— — — E — — — E — — —	BELOW GROUND ELECTRICAL SUPPLY
—— — — G — — — G ——	GAS SUPPLY BELOW GROUND
——— HV ——— HV ———	HIGH VOLTAGE ELECTRICAL SUPPLY
— W — W — W — W — W —	WATER SUPPLY ABOVE GROUND
—— — — W — — — W ——	WATER SUPPLY BELOW GROUND
—— — — S — — — S ——	SEWER LINE
—— — — SW — — — SW ——	STORM WATER
——— FE ——— FE ———	ABOVE GROUND FEEDER CABLES
—— — — FE — — — FE ——	BELOW GROUND FEEDER CABLES



SITE ACCESS AND LOCALITY PLAN



NOTES:

1. ALL FEEDER ACCESS POINTS ON THE STRUCTURE MUST BE BIRD PROOFED AS PER EXTERNAL PLANT POLICY 003615.
2. FOR EME SIGNS NOTED AS (X) REFER TO TP005W08 DOCUMENTS FOR DETAILS.
3. FOR SITE SPECIFIC NOTES REFER TO SHEET S0.

PROPERTY DESCRIPTION

LOT 15 RP28368

SITE STRUCTURE CO-ORDINATES (GDA94)	
GPS READING ACCURACY: ± 10m	
CENTRE OF MONOPOLE	
LATITUDE	-25.176700° (GDA 94)
LONGITUDE	151.641360° (GDA 94)

SITE ACCESS

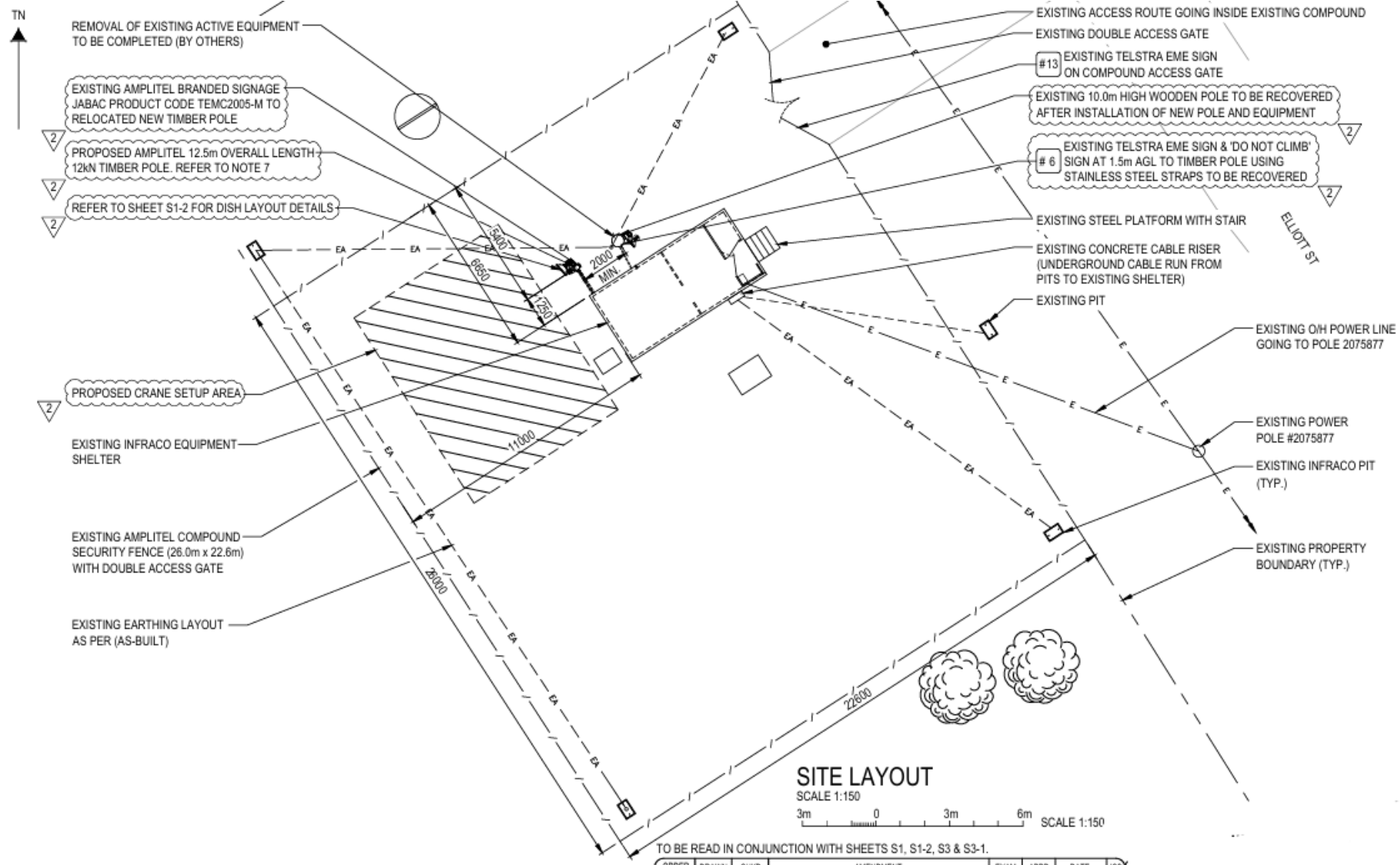
SCALE 1:500

5m 0 5m 10m 15m 20m 25m SCALE 1:500

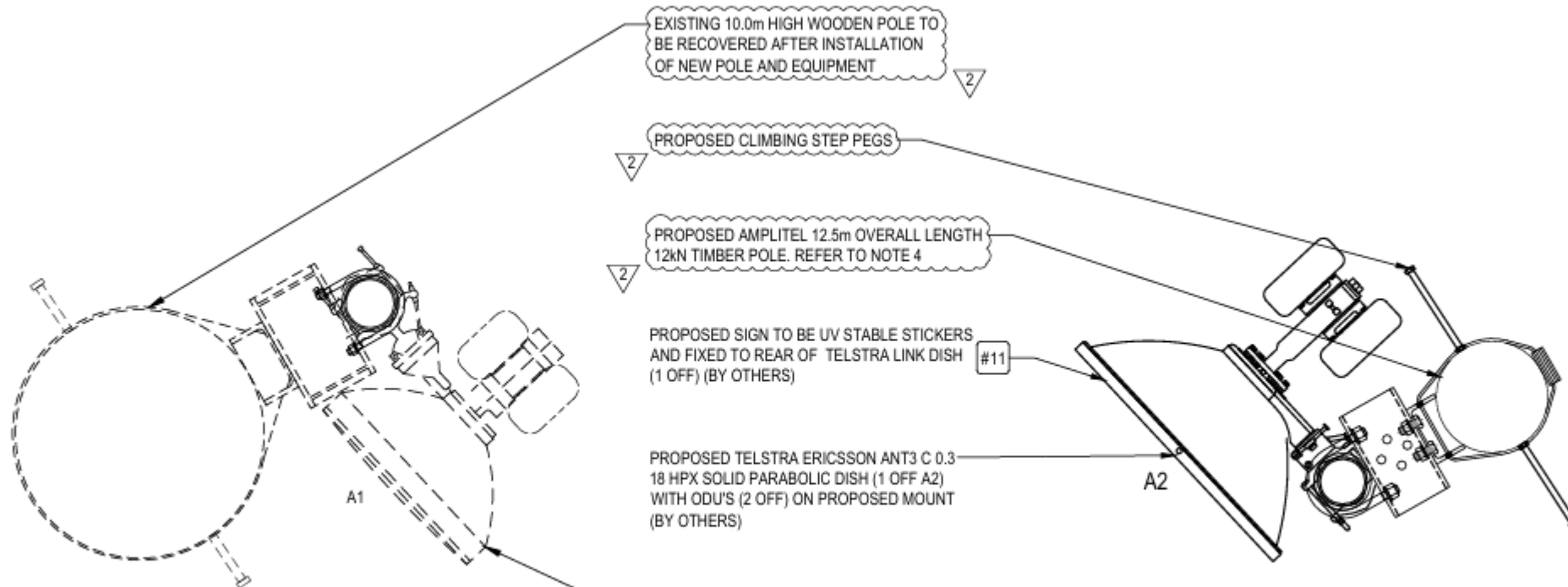


Leaf Nest

SITE LAYOUT



ANTENNA LAYOUT



EXISTING 10.0m HIGH WOODEN POLE TO BE RECOVERED AFTER INSTALLATION OF NEW POLE AND EQUIPMENT

PROPOSED CLIMBING STEP PEGS

PROPOSED AMPLITEL 12.5m OVERALL LENGTH 12kN TIMBER POLE. REFER TO NOTE 4

PROPOSED SIGN TO BE UV STABLE STICKERS AND FIXED TO REAR OF TELSTRA LINK DISH (1 OFF) (BY OTHERS)

PROPOSED TELSTRA ERICSSON ANT3 C 0.3 18 HPX SOLID PARABOLIC DISH (1 OFF A2) WITH ODU'S (2 OFF) ON PROPOSED MOUNT (BY OTHERS)

EXISTING RT DISH COMELIT THP 03-173SWB SOLID PARABOLIC DISH (1 OFF A1) TO BE RECOVERED (BY OTHERS)

DISH LAYOUT AT EL 10.3m

SCALE 1:10

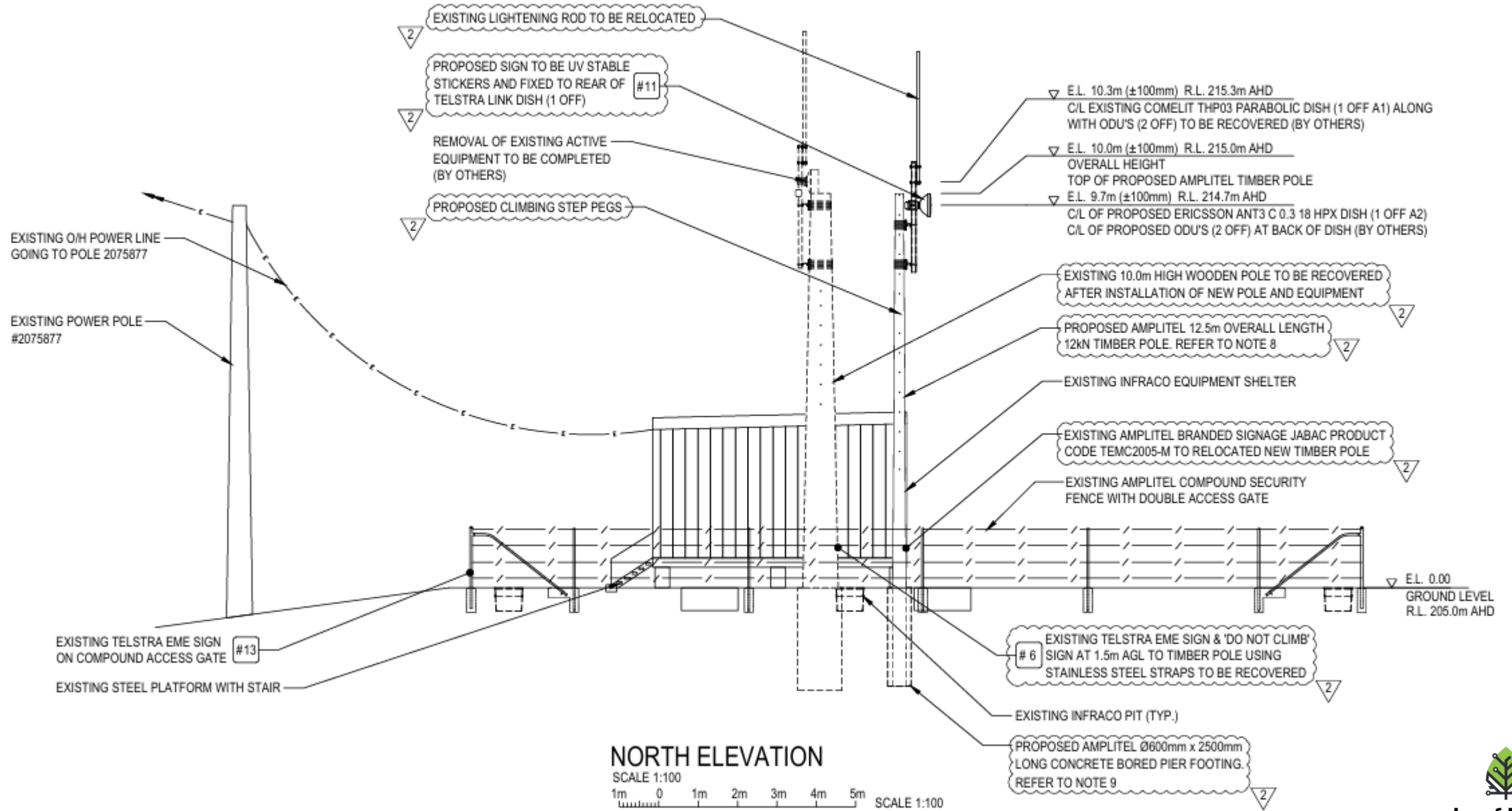


DISH LAYOUT AT EL 9.7m

SCALE 1:10



NORTH ELEVATION



NORTH ELEVATION

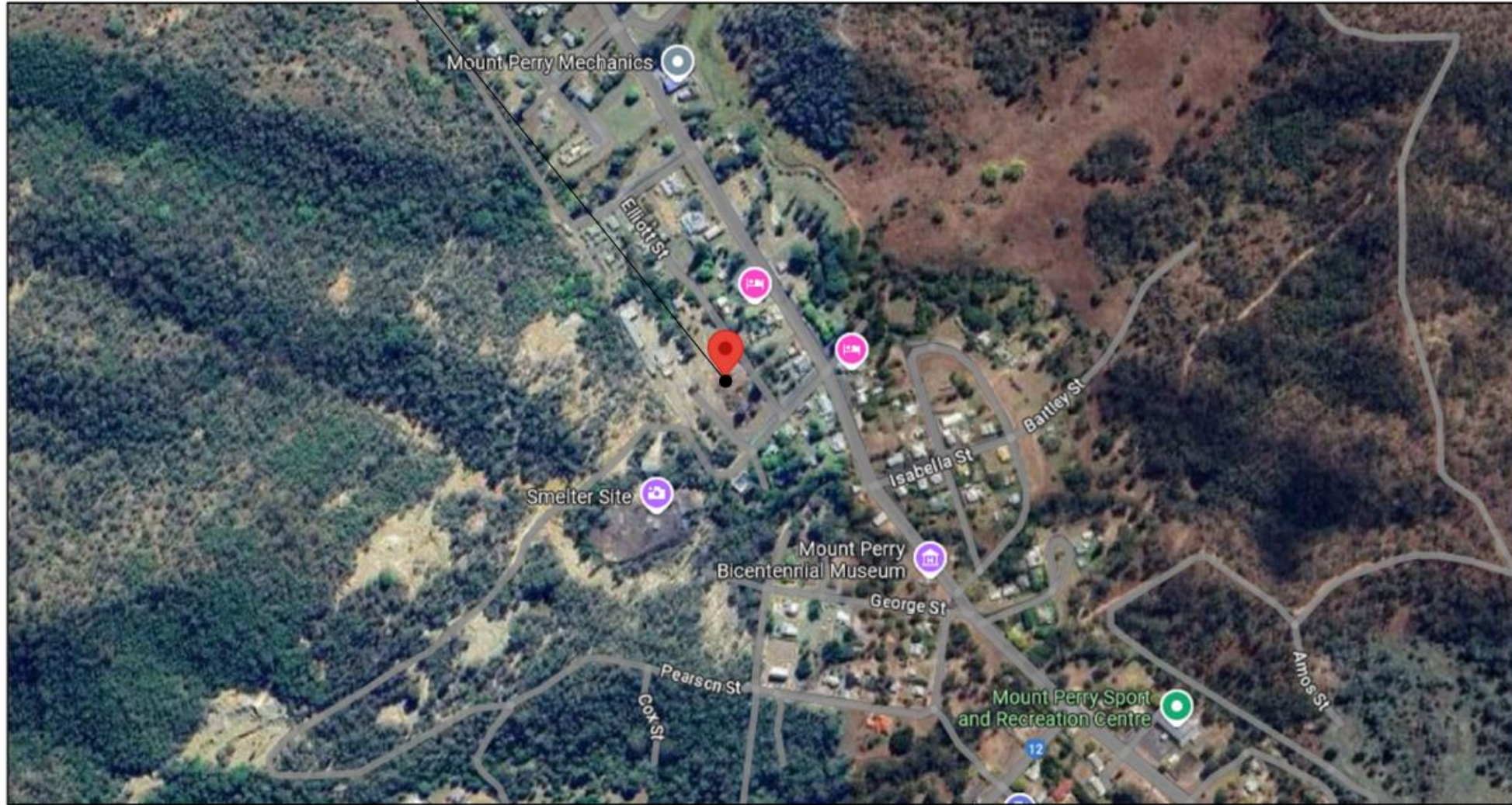
SCALE 1:100

1m 0 1m 2m 3m 4m 5m SCALE 1:100



AERIAL PHOTO LOCALITY PLAN

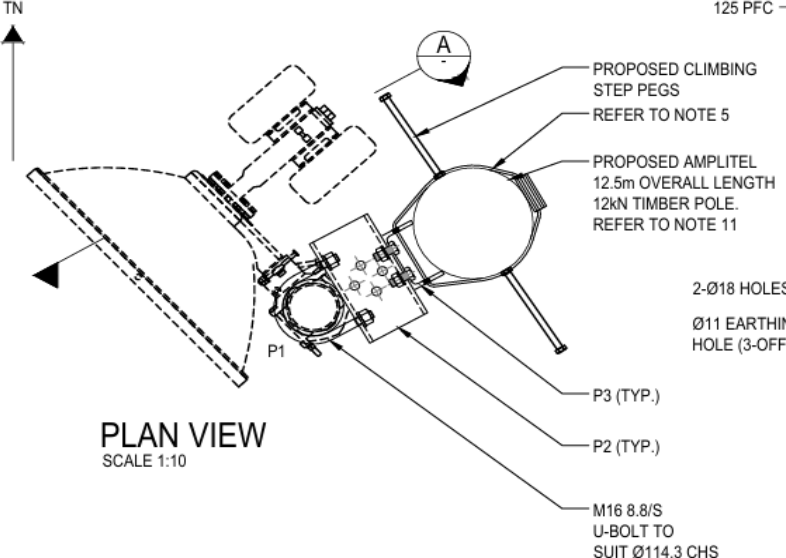
EXISTING AMPLITEL SITE



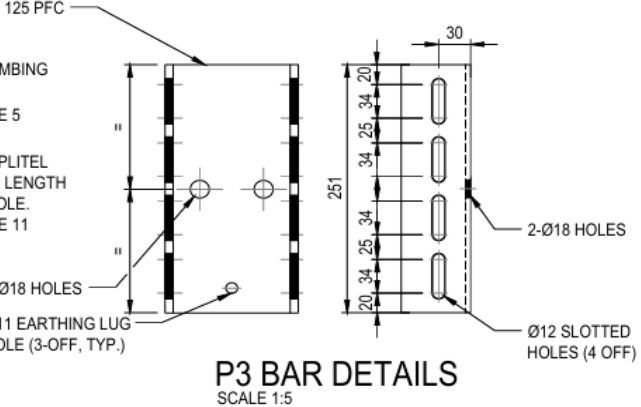
AERIAL PHOTO LOCALITY PLAN
NOT TO SCALE

PARABOLIC DISH MOUNTING DETAILS

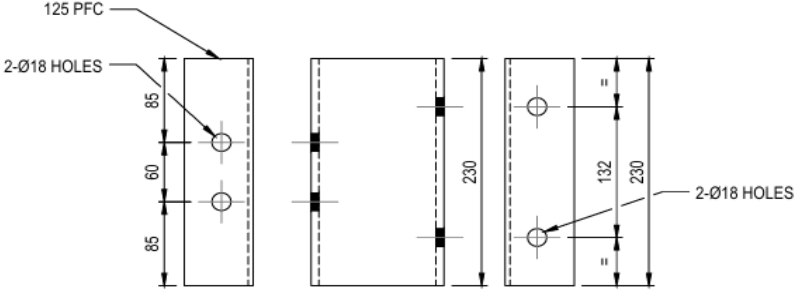
ITEM	DESCRIPTION	QTY	GRADE
P1	Ø1143 x 5.4 CHS x 2800 LONG	1	250 GRADE
P2	125 PFC x 230 LONG	2	-
P3	125 PFC x 251 LONG	2	-



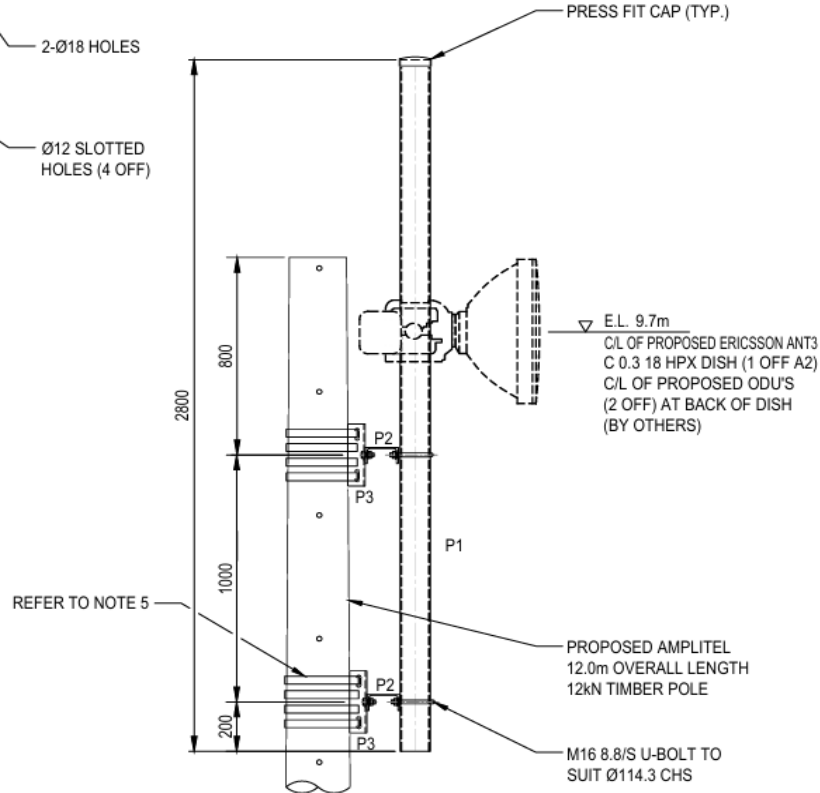
PLAN VIEW
SCALE 1:10



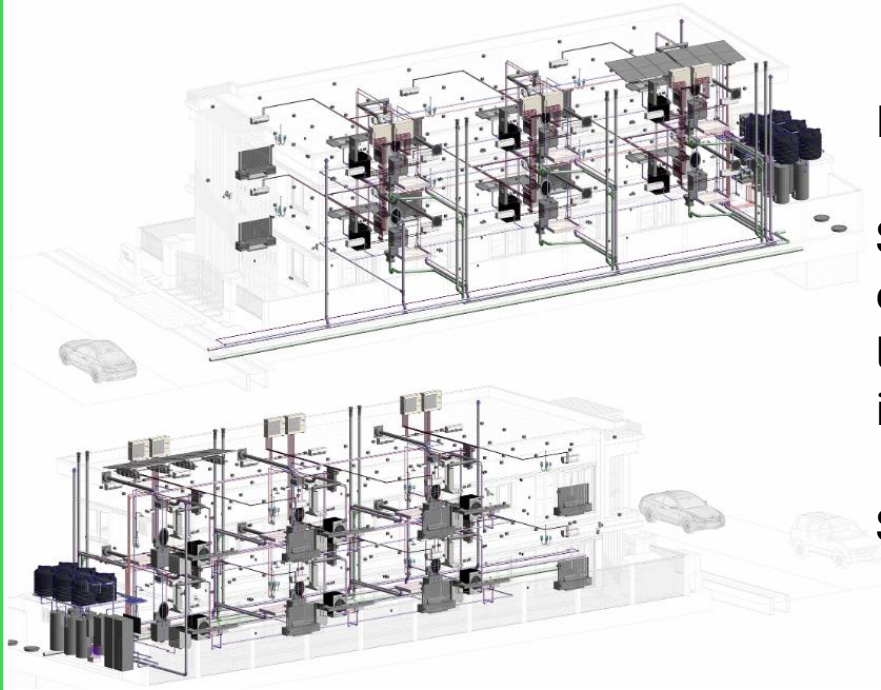
P3 BAR DETAILS
SCALE 1:5



P2 BAR DETAILS
SCALE 1:5



VIEW
SCALE 1:20



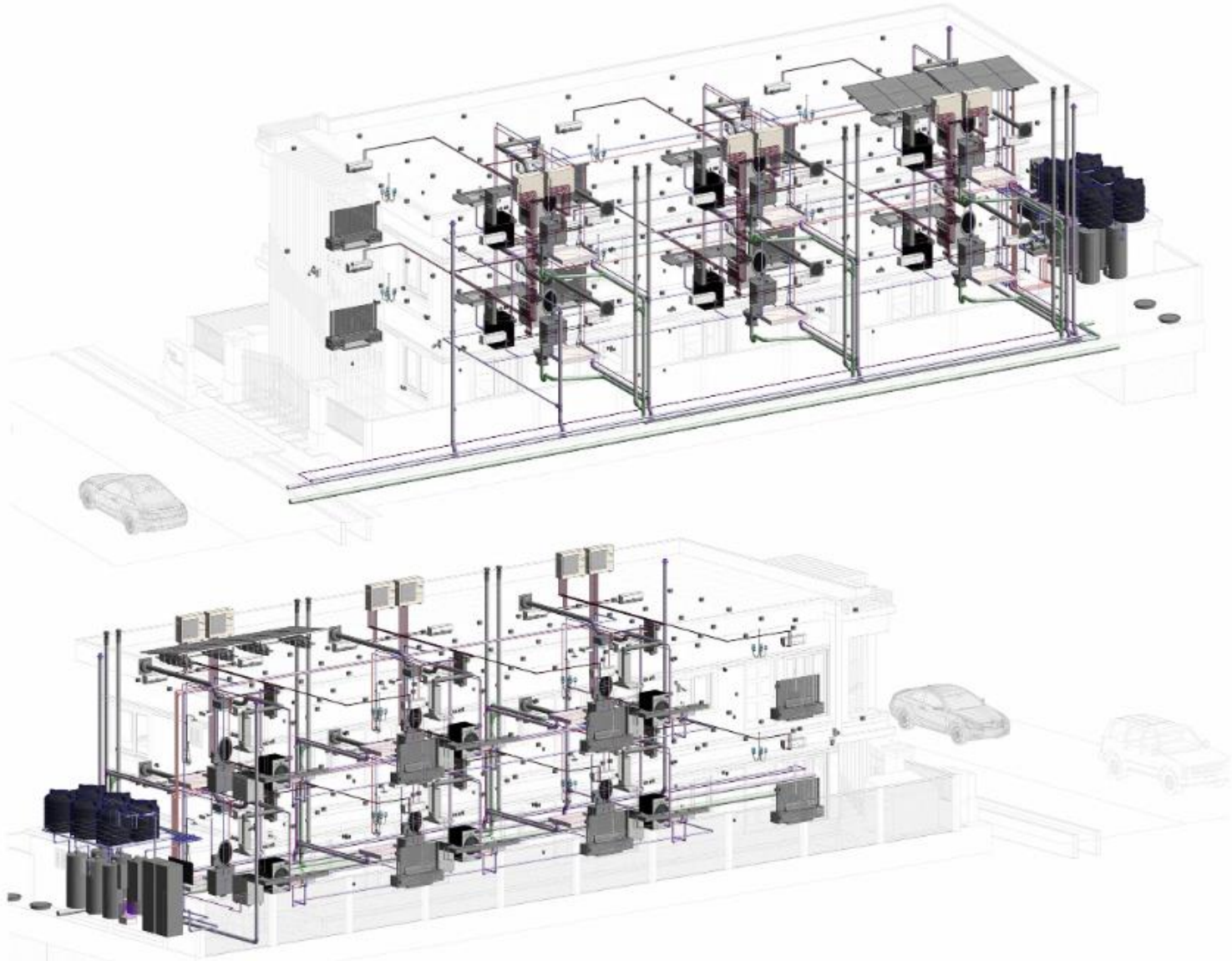
Project Type: Residential – **2BHK Multi-Unit (6 Apartments)**

Scope: Delivered complete **MEP planning for a 2BHK six-unit residential complex**. Included coordination of mechanical ventilation, electrical wiring layouts, and plumbing systems across all floors. Ensured seamless integration with architectural and structural plans for efficient service routing.

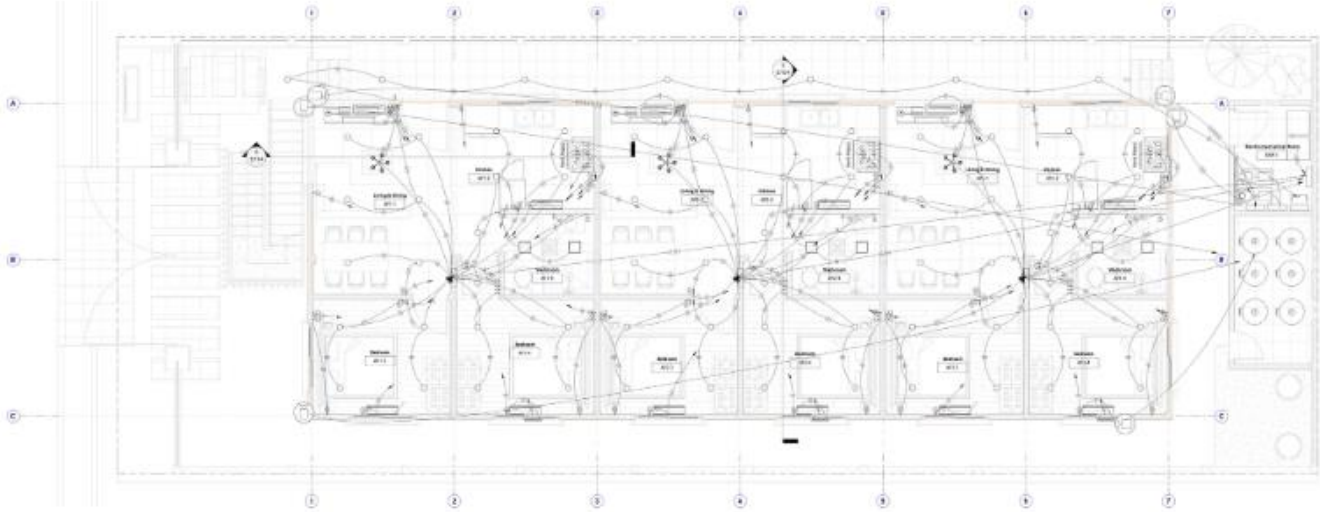
Software Used: AutoCAD, Revit (MEP), Navisworks



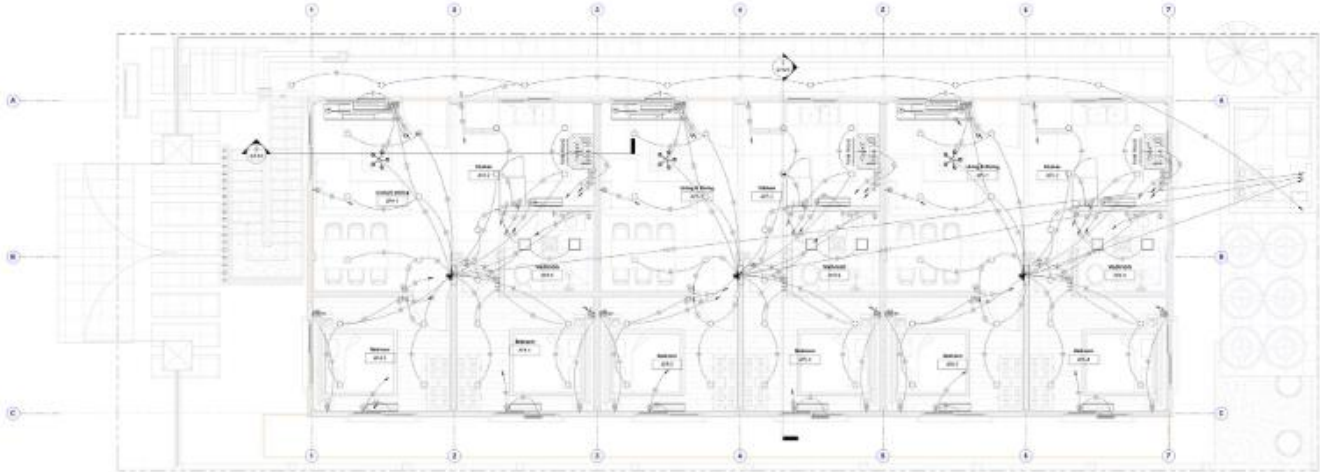
MEP Coordination Model



Electric Wiring Plan Ground Floor & 1st Floor

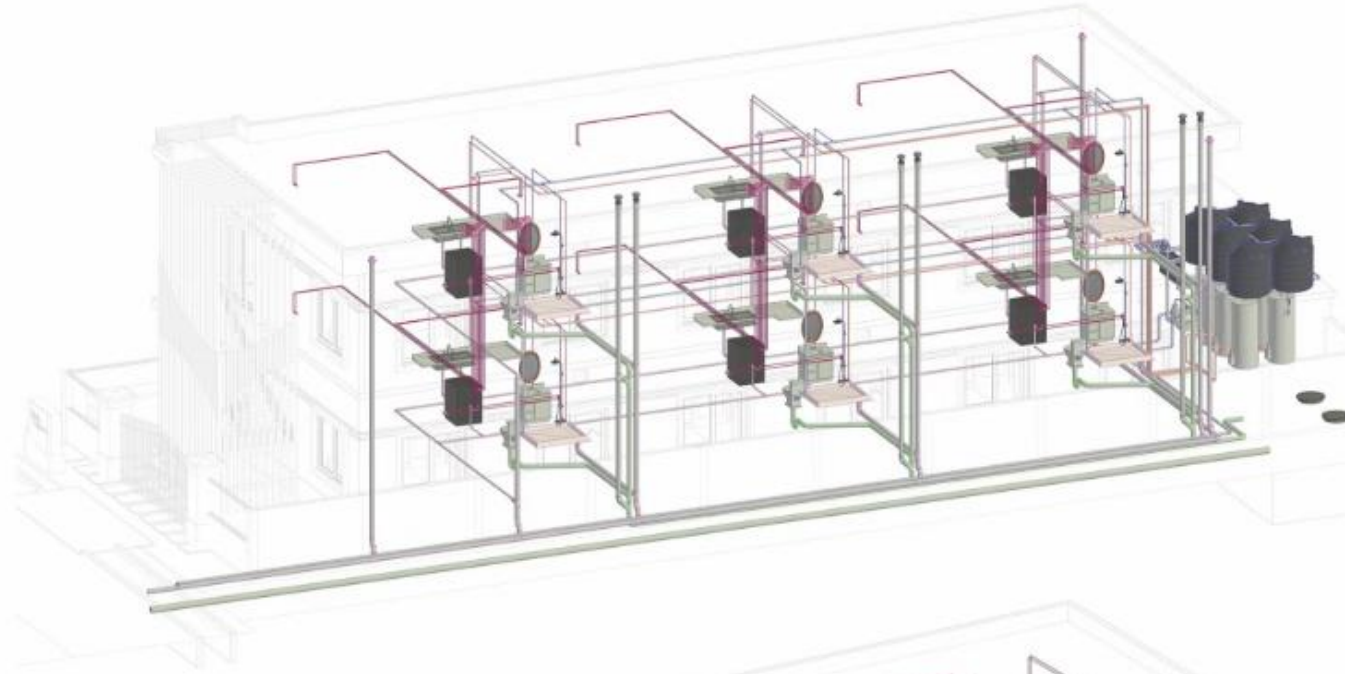


1 Ground Floor Electrical Wiring Plan
1 : 42

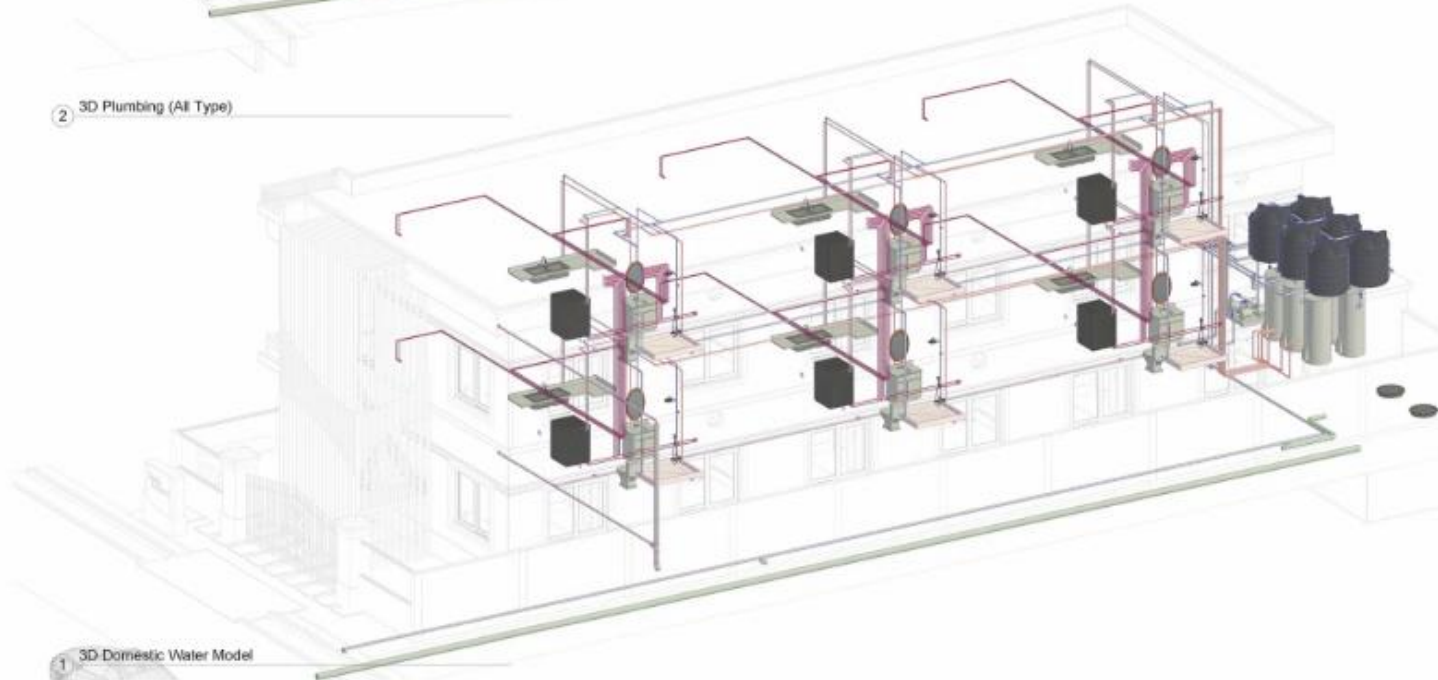


2 First Floor Electrical Wiring Plan
1 : 42

Plumbing Model



2 3D Plumbing (All Type)



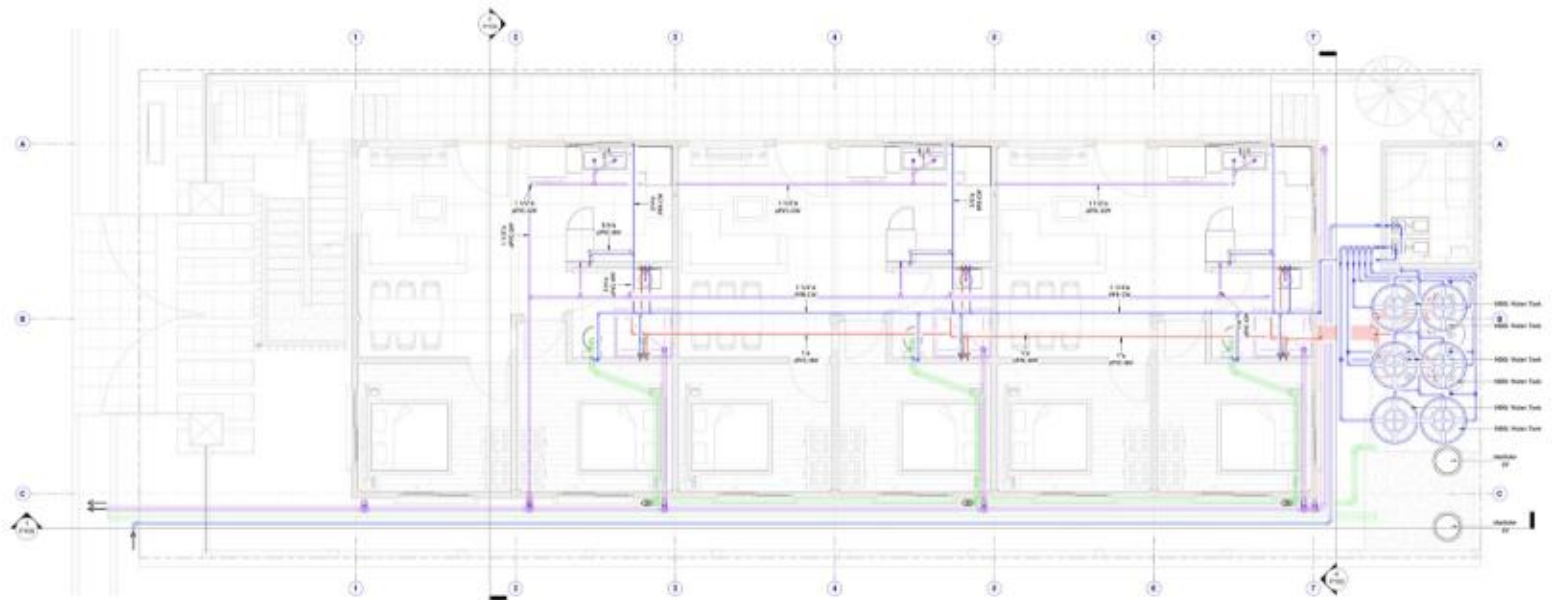
1 3D Domestic Water Model



Ground Floor Plumbing Plan



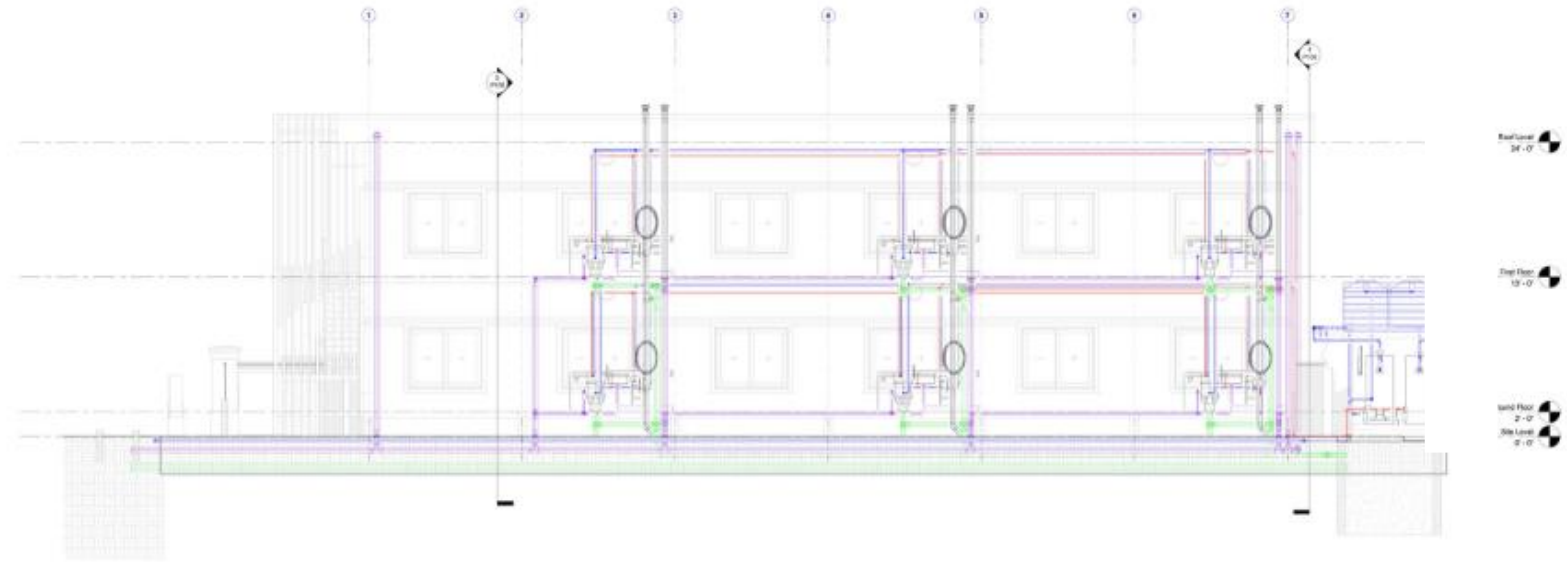
1 Ground Floor Plumbing Plan (Floor Routing)
1 : 42



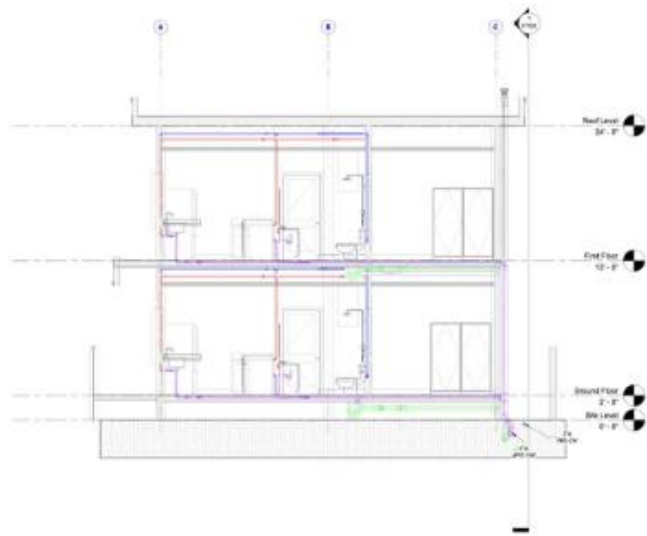
2 Ground Floor Plumbing Plan (Above Ceiling)
1 : 42



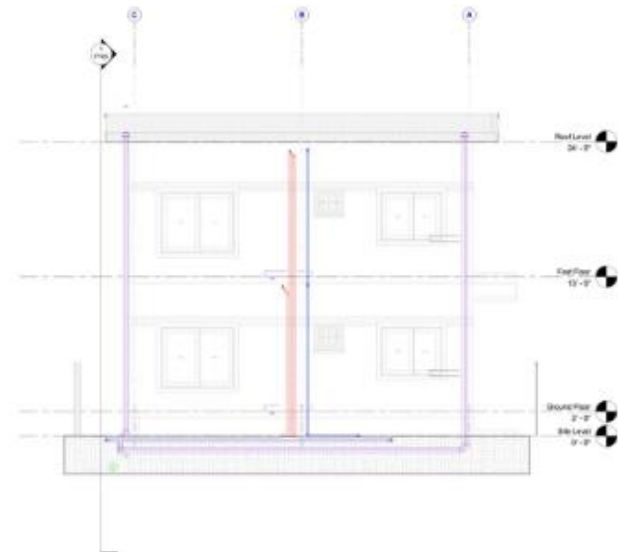
Roof Plumbing Plan & Sections



1 Section 4
1:42

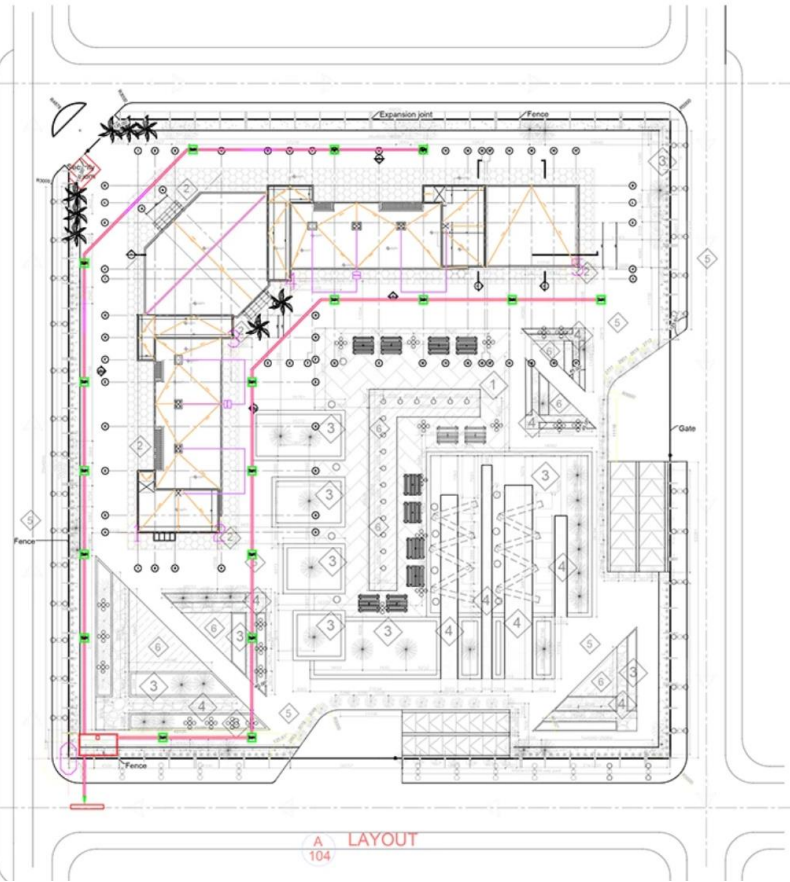


5 Section 7
1:42



4 Section 6
1:42





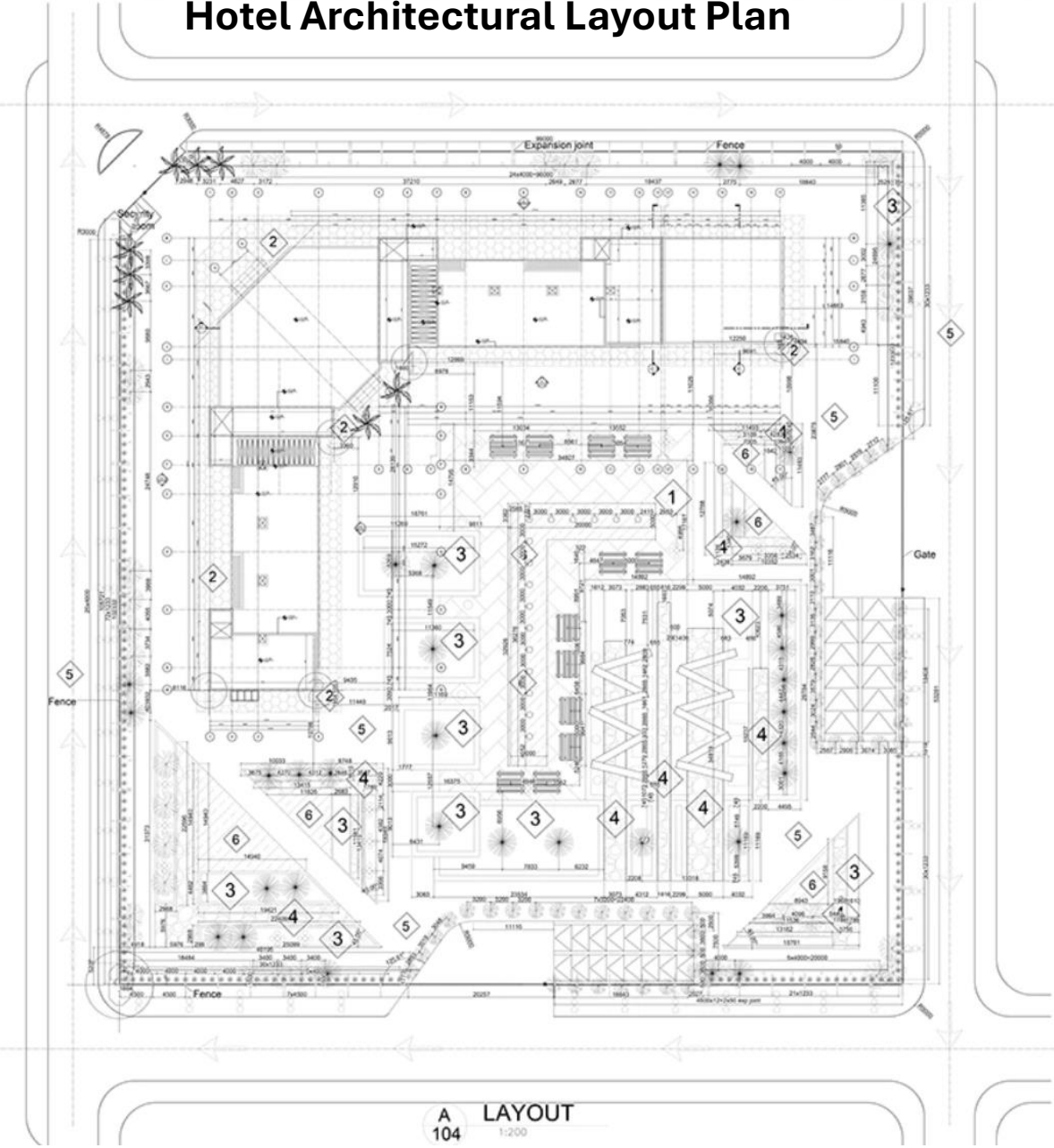
Project Type: Commercial Development – **Hospitality Facility Site Engineering and Structural Layout**

Scope: **Integrated site planning, structural zoning, and vertical/horizontal alignment strategy**

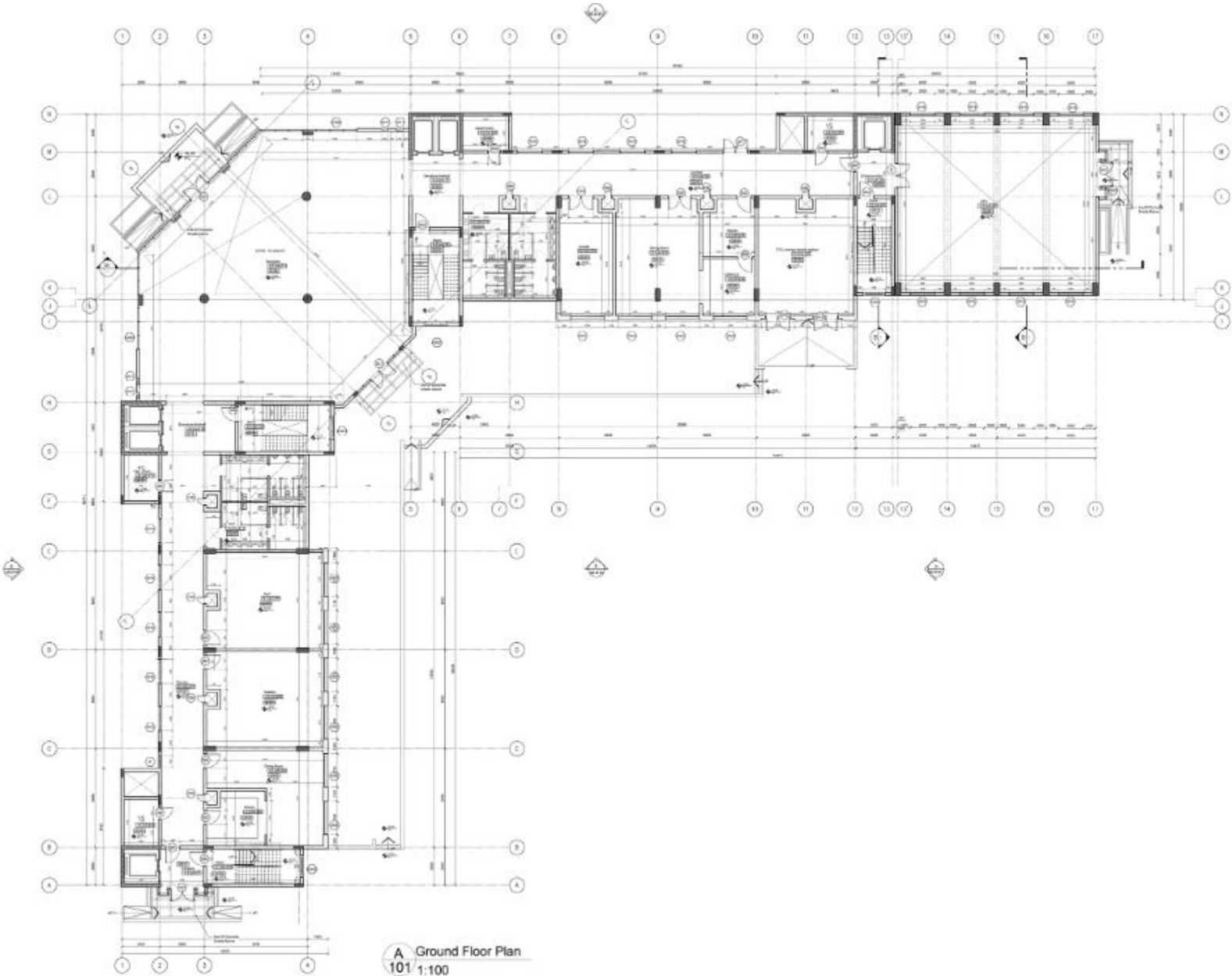
Software Used: AutoCAD, SketchUp, Lumion



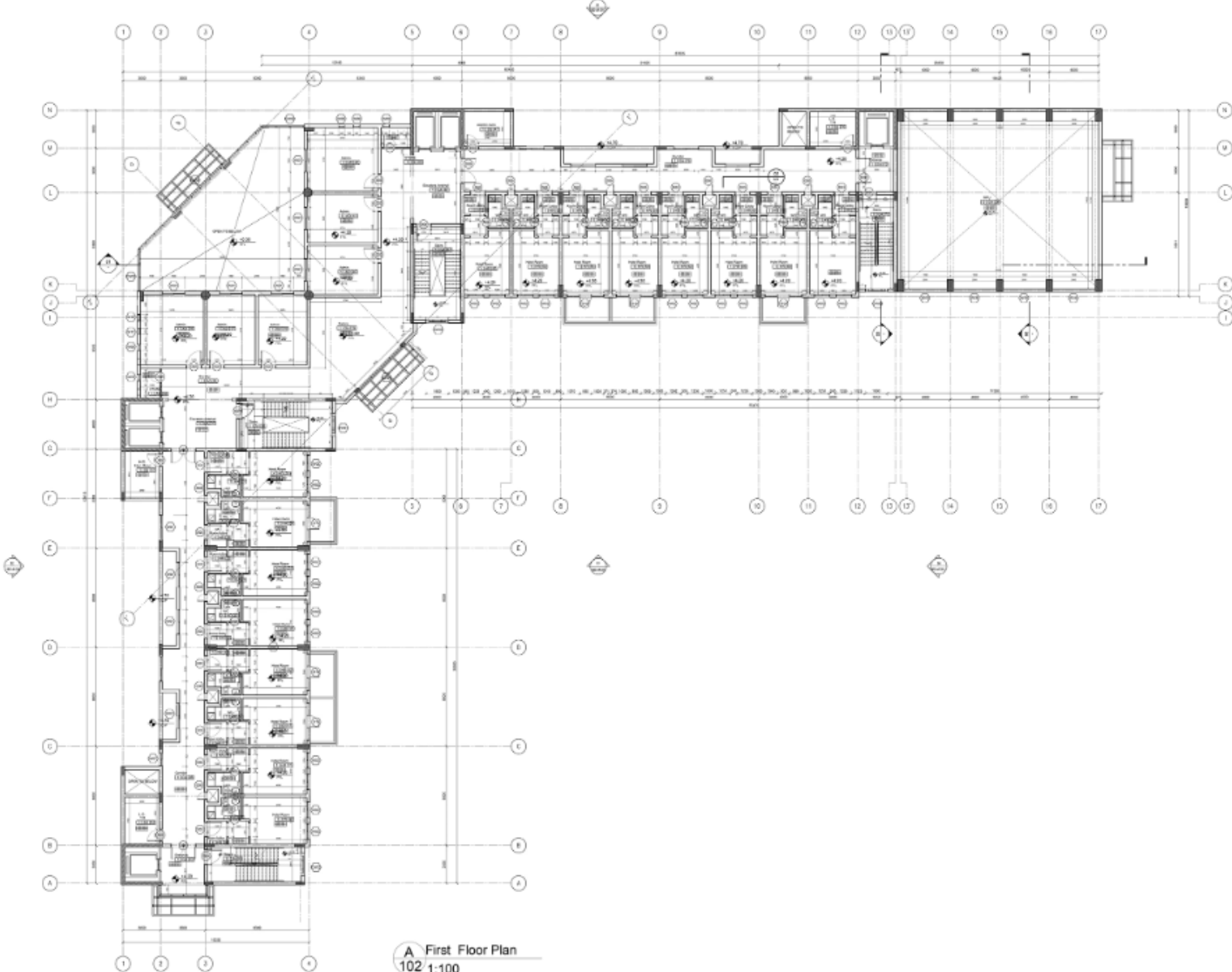
Hotel Architectural Layout Plan



Ground Floor Plan

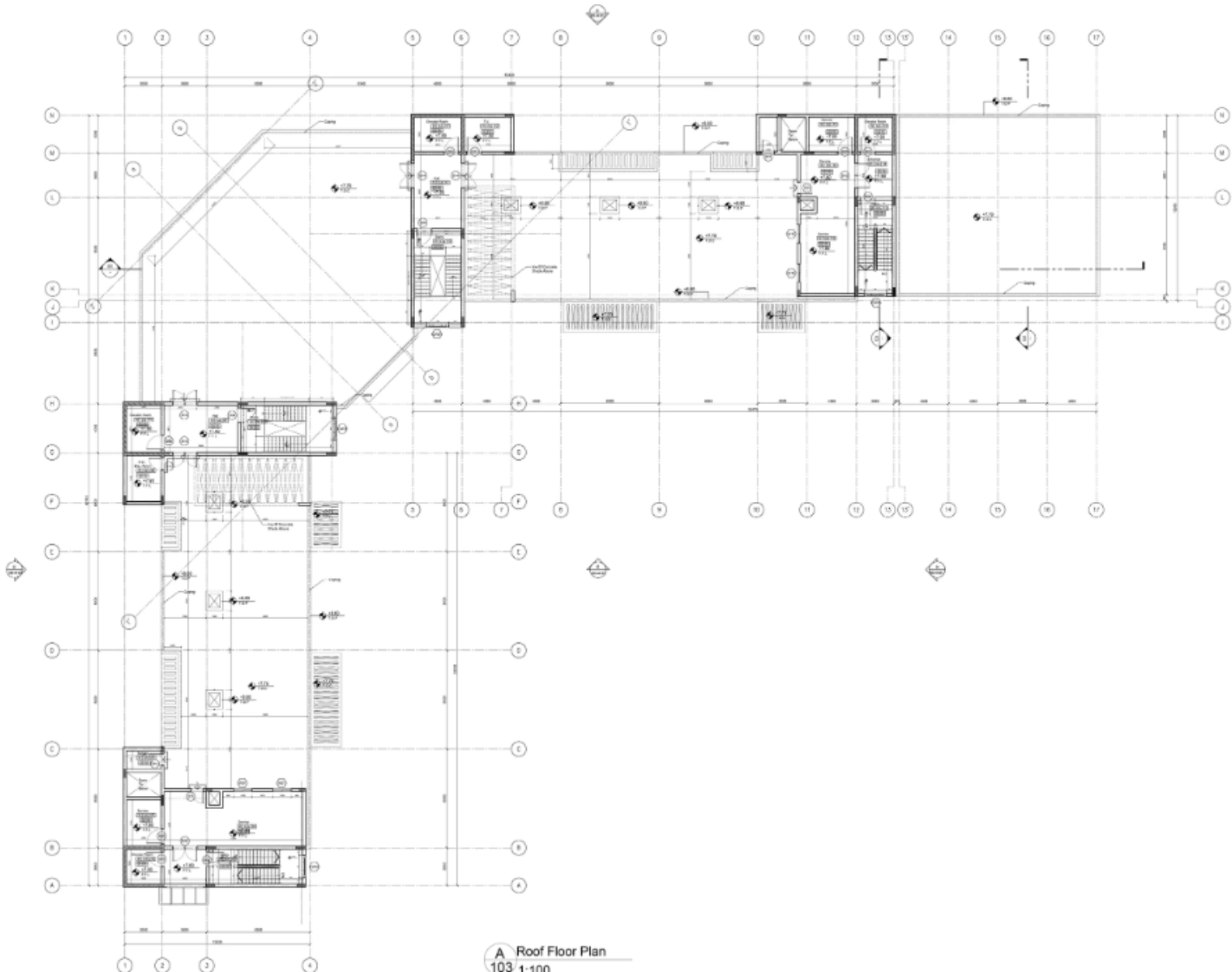


First Floor Plan



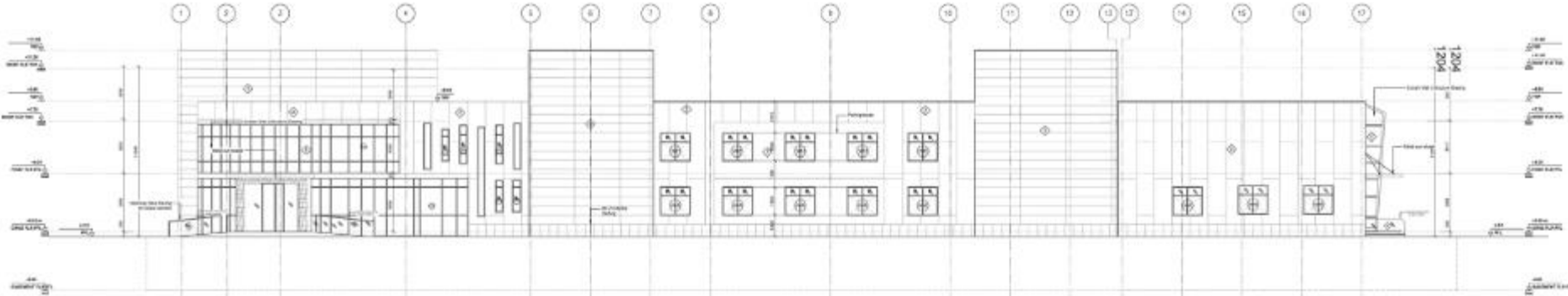
A First Floor Plan
102 1:100

Roof Floor Plan

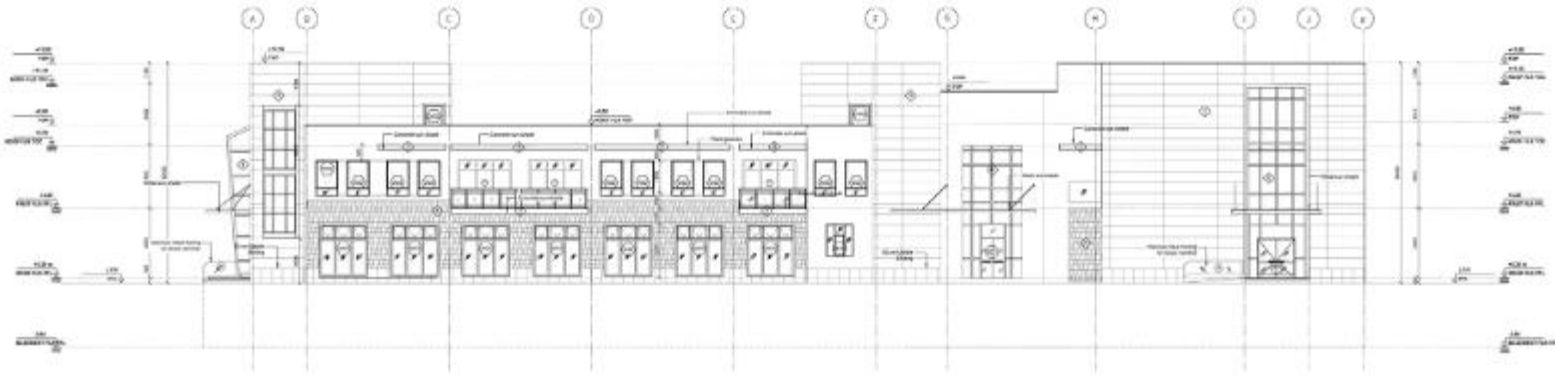


A Roof Floor Plan
103 1:100

Hotel Elevation Plans

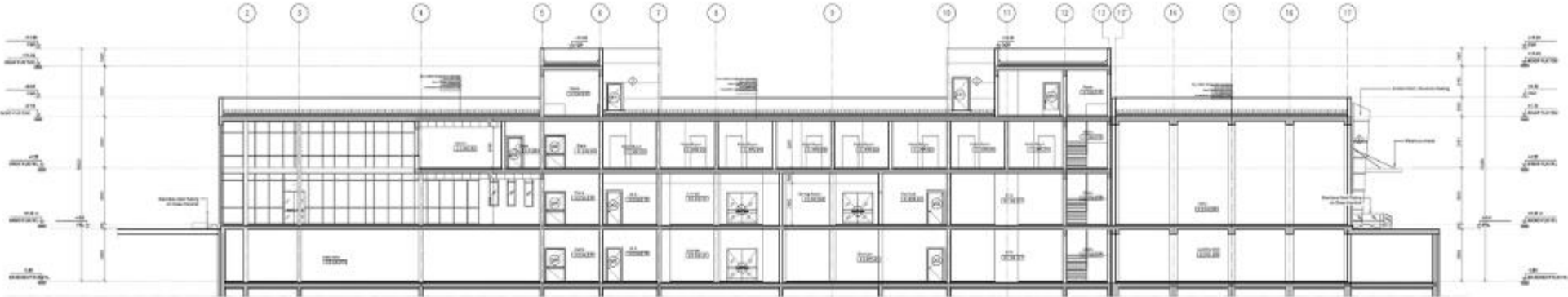


A ELEVATION 1
200 1:100

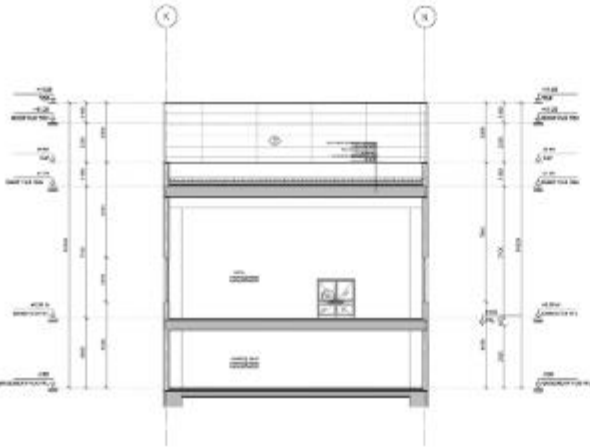


A ELEVATION 4
201 1:100

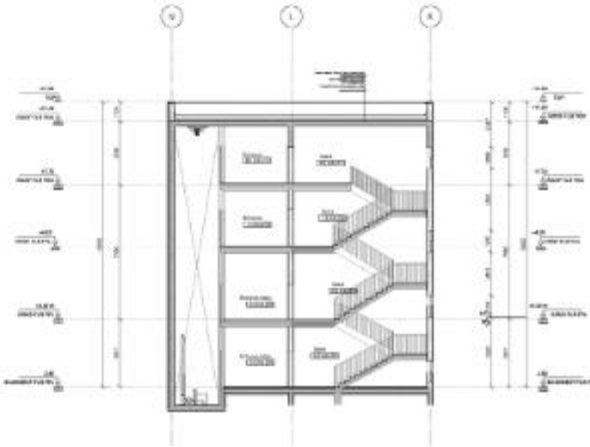
Architectural Section Views of Hotel



A Section 1
300 1:100

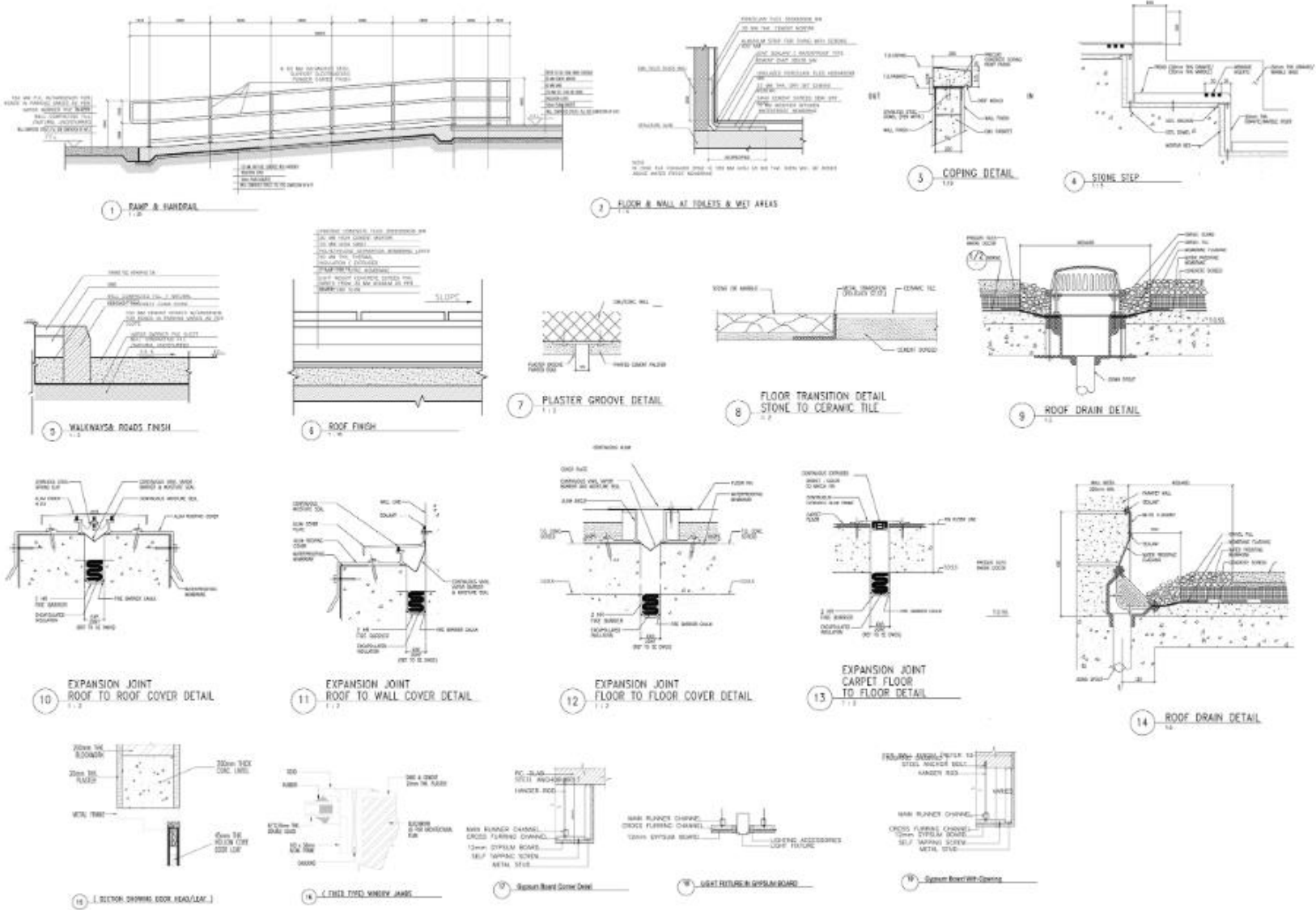


A Section 2
301 1:100

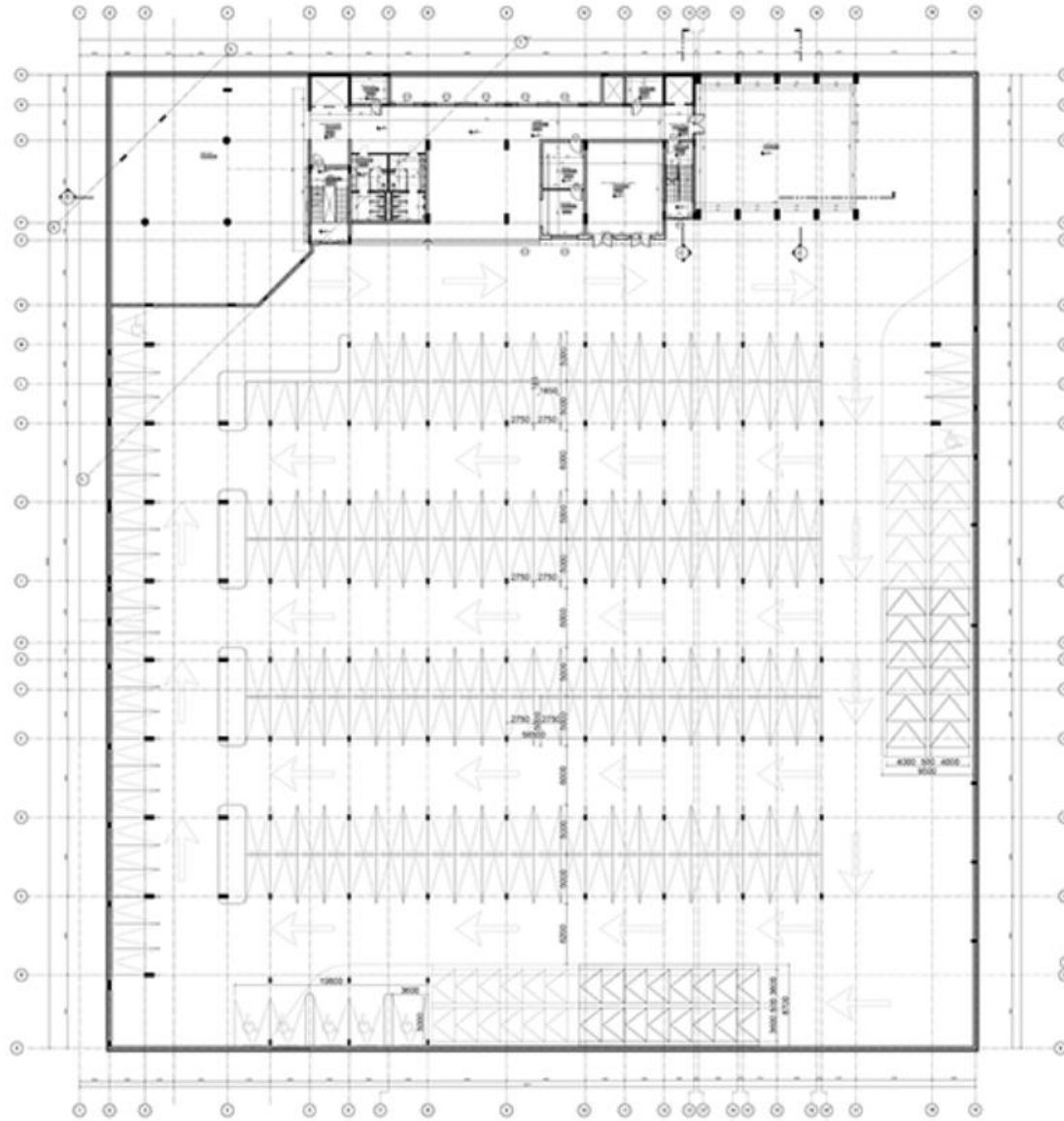


A Section 3
302 1:100

Construction Details Sheet



Basement Floor Plan



A
100
BASEMENT_FLOOR_PLAN
1:200





Architectural Finishes, Symbols, and Material Legend

		FLOORING	WALLS
		F01 W01	S01 C01
		SKIRTING	CEILING
No.		DESCRIPTION	
Flooring	01	VINYL WITH COLORS AS PER RECOMMENDED SPECIFICATIONS	
	02	PORCELAIN TILES-HEAVY DUTY	
	03	CERAMIC TILES	
	04	GRANITE TILES	
	05	MARBLE TILES	
	06	RAISED FLOOR	
	07	vinyl GP - conductive	
	08	PORCELAIN TILES	
	09	CERAMIC TILES-HEAVY DUTY	
	10	SORNAGA TILES	
	11	RUBBER	
	12	HDF	
	13	ANTI CHEMICAL , ANTI BACTERIAL & ANTI SLIP CERAMIC TILES	
	14	CONCRETE FLOOR WITH EPOXY FINISH	
	15	OAK PARQUET	
	16	CEMENT TILES	
Walls	01	PLASTER+PAINT	
	02	PLASTER+ANTI BACTERIAL PAINT	
	03	CERAMIC TILES	
	04	PVC CLADDING 2 MM TH.-1.5 M.H.	
	05	STAINLESS STEEL PANELS	
	06	STAINLESS STEEL PANELS / GLASS PANELS / CAPSULE	
	07	GRANITE TILES	
	08	MARBLE TILES	
	09	PVC CLADDING 2 MM TH. / EPOXY PAINT	
	10	ANTI BACTERIAL CERAMIC TILES	
	11	ANTI CHEMICAL , ANTI BACTERIAL & ANTI SLIP CERAMIC TILES	
Skirting	01	VINYL WITH COLORS AS PER RECOMMENDED SPECIFICATIONS	
	02	PORCELAIN TILES-HEAVY DUTY	
	03	CERAMIC TILES	
	04	GRANITE TILES	
	05	MARBLE TILES	
	06	VINYL GP-CONDUCTIVE	
	07	CERAMIC TILES-HEAVY DUTY	
	08	PORCELAIN TILES	
	09	No Skirting	
	10	SORNAGA TILES	
	11	RUBBER	
12	HDF		
13	ANTI CHEMICAL , ANTI BACTERIAL & ANTI SLIP CERAMIC TILES		
14	OAK PARQUET		
15	CEMENT TILES		
Ceiling	01	GYPSUM BOARD & TILES 60'60	
	02	GYPSUM BOARD	
	03	CEILING PAINT	
	04	EXPOSED	



Ground covering

	Material	Description
1	interlock	rectangular 0.1x0.2
2	Interlock	hexagonal 0.12x0.12
3	Grass	
4	Gravel	
5	Asphalt	
6	Water feature	




plantations

	name	Dimensions	description
		height diameter	
	Sycamore maple	10x5	Deciduous
	Cypress Golden	4x2	Evergreen Casuarina
	Reverna rivularis	3m high	
	shrub	0.5m high	Evergreen Rhynchospora

Lighting elements

	name	Height	description
	L1	2.5	one lamp facing upward
	L2	0.9	a one lamp post
	L3	3	2 lamps facing upward
	L4	3	4 lamps facing upward

Furniture

	name	Dimensions	description
		height width	
	E1	1.8X1.4	2 benches with a table connected
	E2	2.8X3	light structure
	E3	7X3	seating element

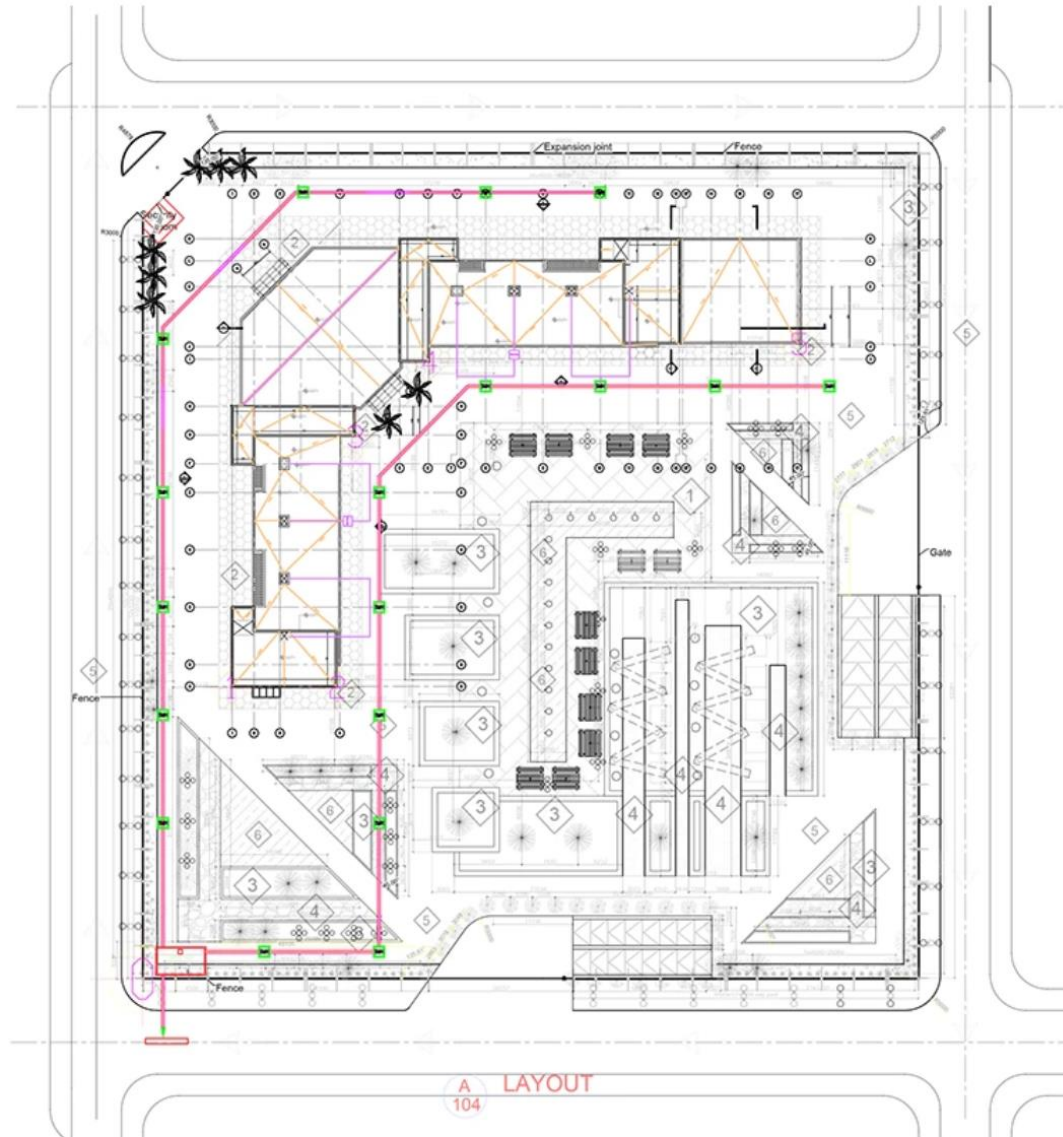
DOORS DIMENSIONS

Door Type	Clear Dimensions			Material	Fire Resistance
	w	h	s		
D01	1200	2200		Wood	Resist
D02	1200	2200		Steel	Resist
D03	1200	2200		Wood	Resist
D04	1200	2200		Steel	Resist
D05	1200	2200		Wood	
D07	1200	2200		Wood	
D09	1000	2200		Aluminium	
D10	1900	1900	300	Steel	Resist
D10a	1900	2200		Wood	
D11	1200	1900	300	Steel	Resist
D12	1200	1900	300	Steel	Resist
D13	1900	2200		Steel	Resist
D14	1900	2200		Steel	Resist

ELEVATION FINISHES

ROOM DESIGNATOR	
SERIES	
1	Stone Cladding
2	Light gray Alucomat Panels
3	Cembrit Facade Boards 610x3050
4	Cembrit Facade Boards
5	White plaster
6	curtain wall
7	Beige plaster
8	Glass balustrade

Site Layout Plan with Landscape and Furniture Legend



Ground covering		
	Material	Description
1	interlock	
2	Interlock	
3	Grass	
4	Gravel	
5	Asphalt	

plantations			
	name	Dimensions Height Spacing	Description
	Acacia sapling	10x5	Acacia
	Capena tree	4x2	Frangula Capensis
	Acacia tree	3m high	Acacia
	Acacia	0.5m high	Acacia

Lighting elements			
	name	Hght	description
	L1	2.5	LED street lighting
	L2	0.9	LED street lighting
	L3	3	LED street lighting
	L4	3	LED street lighting

Furniture			
	name	Dimensions Height width	Description
	E1	1.8X1.4	Table
	E2	2.8X3	Table
	E3	7X3	Table